

Daugavpils nov.

Demene, Briģenes iela
Demene, Pumpuru iela
Demene, Ezeru iela
Demene, Teritorija pie Kultūras nama
Dubna, Sporta iela
Dubna, Nākotnes iela (pie ēkas nr. 1A; 3; 5; 7; 9)
Silene, Skaiska iela
Silene, Aizupes iela (pie pasta nodaļas)
Silene, Skolas iela
Silene, Dīķu iela
Silene, Teritorija pie skolas (skolas iela 19)
Silene, Austrumu iela

Partner for Contact:
Order No.:
Company:
Customer No.:

Date: 11.04.2015
Operator:

Operator
Telephone
Fax
e-Mail

Table of contents

Daugavpils nov.	
Project Cover	1
Table of contents	2
SIA Elinitor RoadSpark SLIM 80W	
Luminaire Data Sheet	5
RoadSpark SLIM 60W	
Luminaire Data Sheet	6
Demene, Briģenes iela	
Planning data	7
Luminaire parts list	8
False Colour Rendering	9
Valuation Fields	
Valuation Field Roadway 1	
Results overview	10
Observer	
Observer 1	
Isolines (L)	11
Observer 2	
Isolines (L)	12
Demene, Pumpuru iela	
Planning data	13
Luminaire parts list	14
False Colour Rendering	15
Valuation Fields	
Roadway 1	
Results overview	16
Observer	
Observer 1	
Isolines (L)	17
Observer 2	
Isolines (L)	18
Demene, Ezeru iela	
Planning data	19
Luminaire parts list	20
False Colour Rendering	21
Valuation Fields	
Roadway 1	
Results overview	22
Observer	
Observer 1	
Isolines (L)	23
Observer 2	
Isolines (L)	24
Teritorija pie Kultūras nama	
Planning data	25
Luminaire parts list	26
False Colour Rendering	27
Valuation Fields	
Roadway 1	
Results overview	28
Dubna, Sporta iela	
Planning data	29
Luminaire parts list	30
False Colour Rendering	31

Operator
Telephone
Fax
e-Mail

Table of contents

Valuation Fields	
Valuation Field Roadway 1	
Results overview	32
Observer	
Observer 1	
Isolines (L)	33
Observer 2	
Isolines (L)	34
Dubna, Nākotnes iela (pie ēkas nr. 1A; 3; 5; 7; 9)	
Planning data	35
Luminaire parts list	36
False Colour Rendering	37
Valuation Fields	
Valuation Field Roadway 1	
Results overview	38
Silene, Skaiska iela	
Planning data	39
Luminaire parts list	40
False Colour Rendering	41
Valuation Fields	
Valuation Field Roadway 1	
Results overview	42
Observer	
Observer 1	
Isolines (L)	43
Observer 2	
Isolines (L)	44
Silene, Aizupes iela (pie pasta nodaļas)	
Planning data	45
Luminaire parts list	46
False Colour Rendering	47
Valuation Fields	
Valuation Field Roadway 1	
Results overview	48
Observer	
Observer 1	
Isolines (L)	49
Observer 2	
Isolines (L)	50
Silene, Skolas iela	
Planning data	51
Luminaire parts list	52
False Colour Rendering	53
Valuation Fields	
Valuation Field Roadway 1	
Results overview	54
Observer	
Observer 1	
Isolines (L)	55
Observer 2	
Isolines (L)	56
Silene, Dīķu iela	
Planning data	57
Luminaire parts list	58

Operator
Telephone
Fax
e-Mail

Table of contents

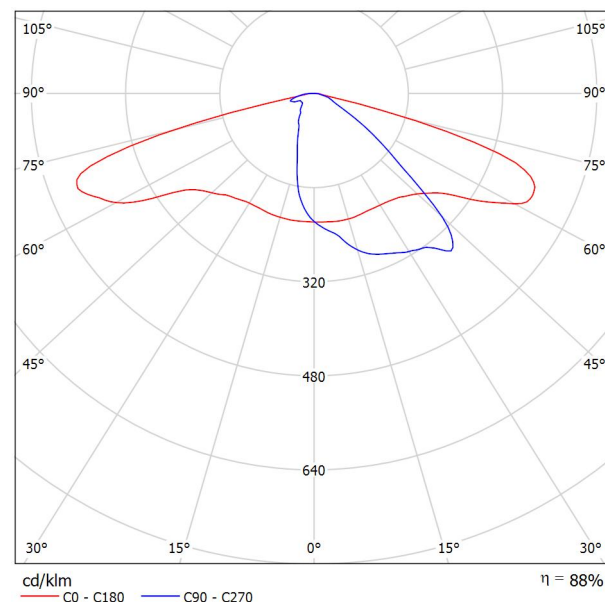
False Colour Rendering	59
Valuation Fields	
Valuation Field Roadway 1	
Results overview	60
Observer	
Observer 1	
Isolines (L)	61
Observer 2	
Isolines (L)	62
Silene, Teritorija pie skolas (skolas iela 19)	
Planning data	63
Luminaire parts list	64
False Colour Rendering	65
Valuation Fields	
Valuation Field Roadway 1	
Results overview	66
Silene, Austrumu iela	
Planning data	67
Luminaire parts list	68
False Colour Rendering	69
Valuation Fields	
Valuation Field Roadway 1	
Results overview	70

Operator
Telephone
Fax
e-Mail

SIA Elnitor RoadSpark SLIM 80W / Luminaire Data Sheet

Luminous emittance 1:

See our luminaire catalog for an image of the luminaire.



Luminaire classification according to CIE: 100
CIE flux code: 35 68 94 100 88

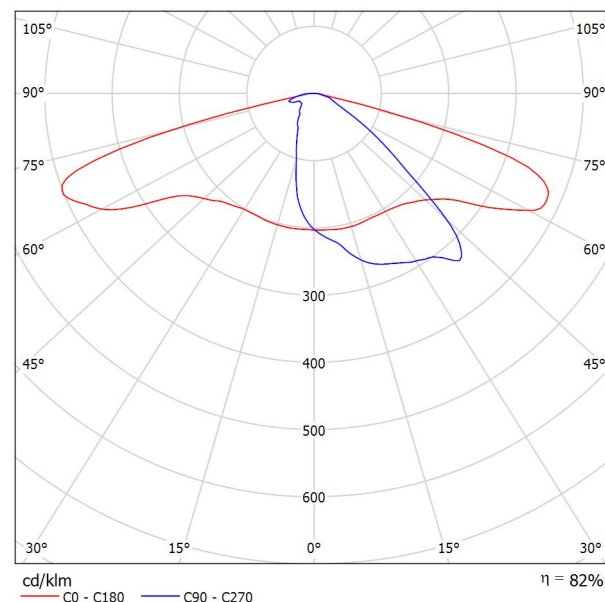
Due to missing symmetry properties, no UGR table
can be displayed for this luminaire.

Operator
Telephone
Fax
e-Mail

RoadSpark SLIM 60W / Luminaire Data Sheet

Luminous emittance 1:

See our luminaire catalog for an image of the luminaire.



Luminaire classification according to CIE: 100
CIE flux code: 35 68 94 100 82

Due to missing symmetry properties, no UGR table can be displayed for this luminaire.

Operator
Telephone
Fax
e-Mail

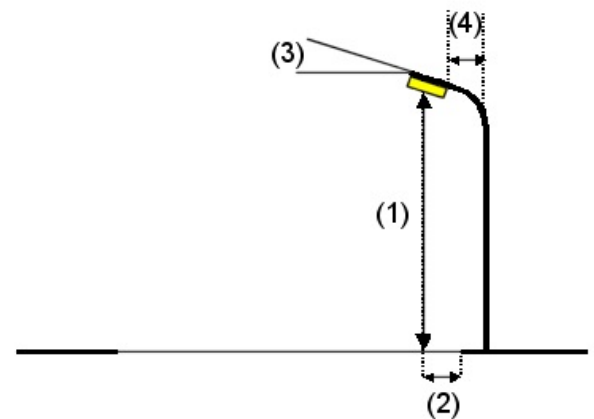
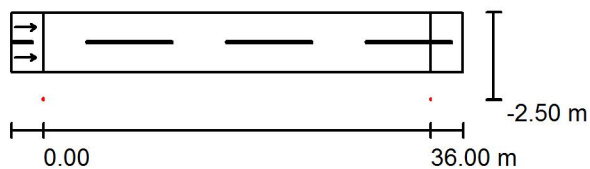
Demene, Briģenes iela / Planning data

Street Profile

Roadway 1 (Width: 5.500 m, Number of lanes: 2, tarmac: R3, q0: 0.070)

Maintenance factor: 0.85

Luminaire Arrangements



Luminaire: SIA Elnitor RoadSpark SLIM 80W

Luminous flux (Luminaire): 8081 lm

Luminous flux (Lamps): 9200 lm

Luminaire Wattage: 80.0 W

Arrangement: Single row, bottom

Pole Distance: 36.000 m

Mounting Height (1): 8.000 m

Height: 8.000 m

Overhang (2): -2.500 m

Boom Angle (3): 0.0 °

Boom Length (4): 1.500 m

Maximum luminous intensities

at 70°: 492 cd/klm

at 80°: 103 cd/klm

at 90°: 13 cd/klm

Any direction forming the specified angle from the downward vertical, with the luminaire installed for use.

No luminous intensities above 90°.

Arrangement complies with luminous intensity class G2.

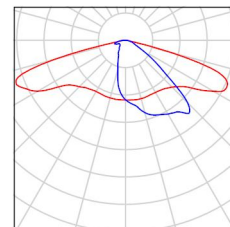
Arrangement complies with glare index class D.4.

Operator
Telephone
Fax
e-Mail

Demene, Brīgenes iela / Luminaire parts list

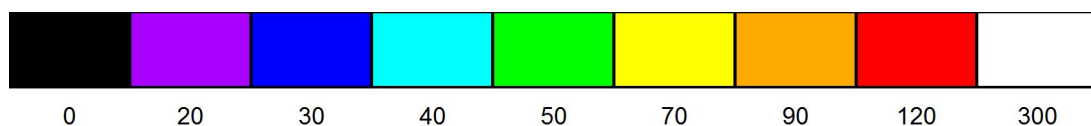
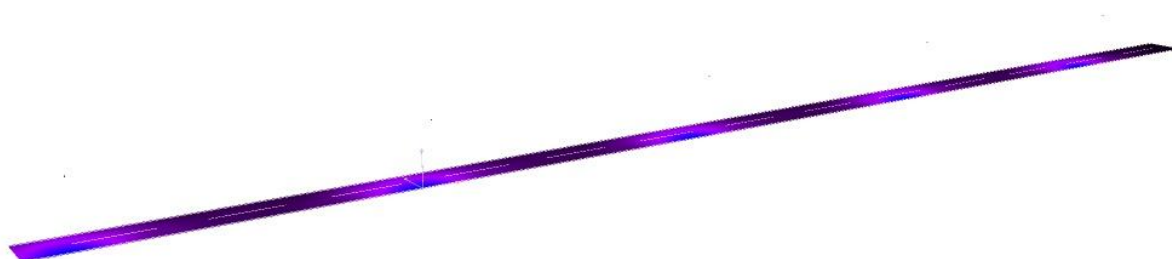
SIA Elnitor RoadSpark SLIM 80W
Article No.:
Luminous flux (Luminaire): 8081 lm
Luminous flux (Lamps): 9200 lm
Luminaire Wattage: 80.0 W
Luminaire classification according to CIE: 100
CIE flux code: 35 68 94 100 88
Fitting: 1 x Cree XP-G (Correction Factor 1.000).

See our luminaire
catalog for an image of
the luminaire.



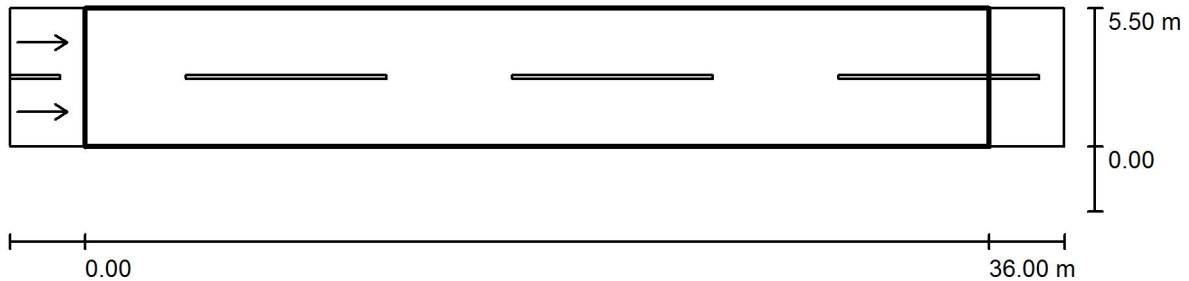
Operator
Telephone
Fax
e-Mail

Demene, Brīgenes iela / False Colour Rendering



Operator
Telephone
Fax
e-Mail

Demene, Brīgenes iela / Valuation Field Roadway 1 / Results overview



Maintenance factor: 0.85

Scale 1:301

Grid: 12 x 6 Points

Accompanying Street Elements: Roadway 1.

tarmac: R3, q0: 0.070

Selected Lighting Class: ME5

(All lighting performance requirements are met.)

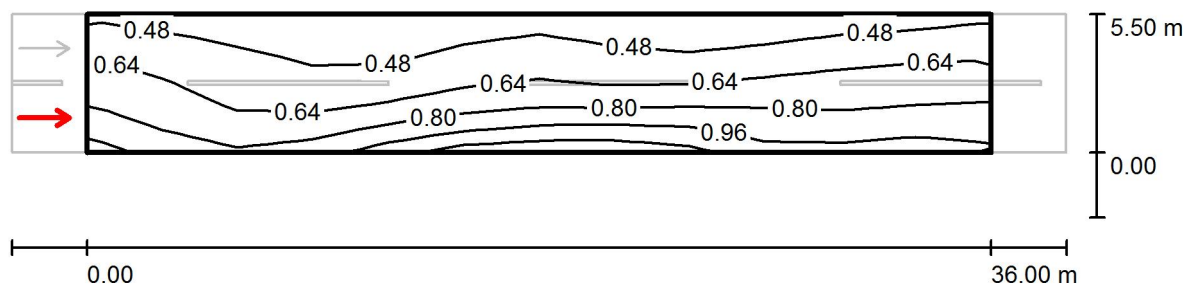
	L_{av} [cd/m ²]	U0	UI	TI [%]	SR
Calculated values:	0.66	0.51	0.70	15	0.79
Required values according to class:	≥ 0.50	≥ 0.35	≥ 0.40	≤ 15	≥ 0.50
Fulfilled/Not fulfilled:	✓	✓	✓	✓	✓

Assigned Observer (2 Pieces):

No.	Observer	Position [m]	L_{av} [cd/m ²]	U0	UI	TI [%]
1	Observer 1	(-60.000, 1.375, 1.500)	0.66	0.53	0.70	15
2	Observer 2	(-60.000, 4.125, 1.500)	0.72	0.51	0.73	9

Operator
Telephone
Fax
e-Mail

Demene, Brīgenes iela / Valuation Field Roadway 1 / Observer 1 / Isolines (L)



Values in Candela/m², Scale 1 : 301

Grid: 12 x 6 Points

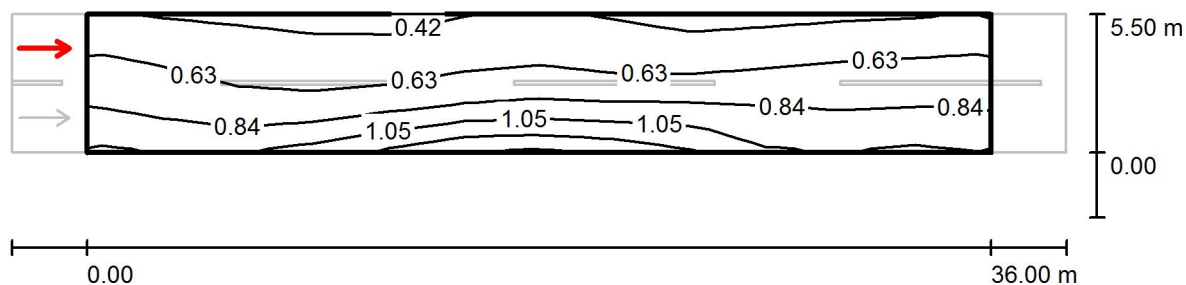
Observer Position: (-60.000 m, 1.375 m, 1.500 m)

tarmac: R3, q0: 0.070

	L_{av} [cd/m ²]	U0	UI	TI [%]
Calculated values:	0.66	0.53	0.70	15
Required values according to class ME5:	≥ 0.50	≥ 0.35	≥ 0.40	≤ 15
Fulfilled/Not fulfilled:	✓	✓	✓	✓

Operator
Telephone
Fax
e-Mail

Demene, Brīgenes iela / Valuation Field Roadway 1 / Observer 2 / Isolines (L)



Values in Candela/m², Scale 1 : 301

Grid: 12 x 6 Points

Observer Position: (-60.000 m, 4.125 m, 1.500 m)

tarmac: R3, q0: 0.070

	L_{av} [cd/m ²]	U0	UI	TI [%]
Calculated values:	0.72	0.51	0.73	9
Required values according to class ME5:	≥ 0.50	≥ 0.35	≥ 0.40	≤ 15
Fulfilled/Not fulfilled:	✓	✓	✓	✓

Operator
Telephone
Fax
e-Mail

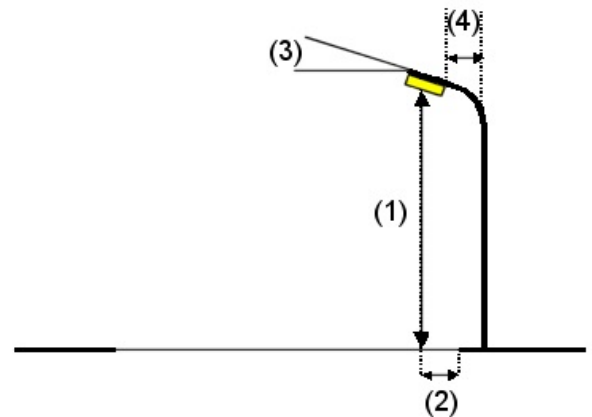
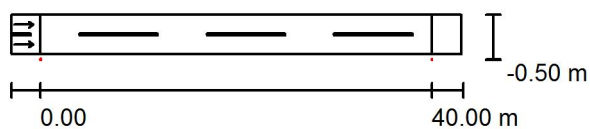
Demene, Pumpuru iela / Planning data

Street Profile

Roadway 1 (Width: 4.000 m, Number of lanes: 2, tarmac: R3, q0: 0.070)

Maintenance factor: 0.85

Luminaire Arrangements



Luminaire:	RoadSpark SLIM 60W
Luminous flux (Luminaire):	6072 lm
Luminous flux (Lamps):	7440 lm
Luminaire Wattage:	60.0 W
Arrangement:	Single row, bottom
Pole Distance:	40.000 m
Mounting Height (1):	8.000 m
Height:	8.000 m
Overhang (2):	-0.500 m
Boom Angle (3):	0.0 °
Boom Length (4):	1.500 m

Maximum luminous intensities

at 70°:	457 cd/klm
at 80°:	96 cd/klm
at 90°:	12 cd/klm

Any direction forming the specified angle from the downward vertical, with the luminaire installed for use.

No luminous intensities above 90°.

Arrangement complies with luminous intensity class G3.

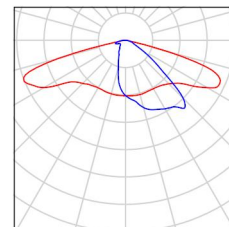
Arrangement complies with glare index class D.4.

Operator
Telephone
Fax
e-Mail

Demene, Pumpuru iela / Luminaire parts list

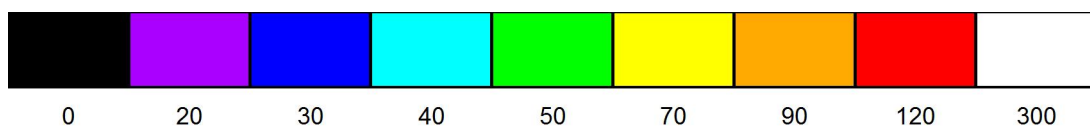
RoadSpark SLIM 60W
Article No.:
Luminous flux (Luminaire): 6072 lm
Luminous flux (Lamps): 7440 lm
Luminaire Wattage: 60.0 W
Luminaire classification according to CIE: 100
CIE flux code: 35 68 94 100 82
Fitting: 1 x Cree XP-G (Correction Factor 1.000).

See our luminaire
catalog for an image of
the luminaire.



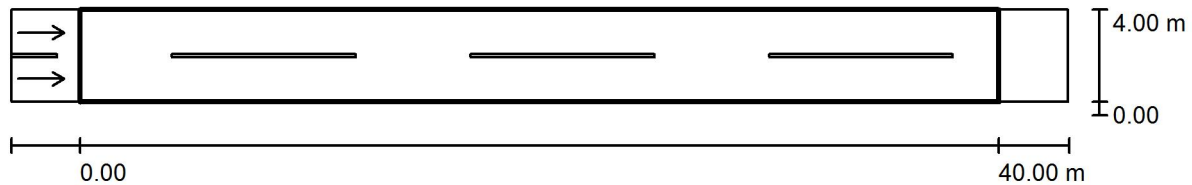
Operator
Telephone
Fax
e-Mail

Demene, Pumpuru iela / False Colour Rendering



Operator
Telephone
Fax
e-Mail

Demene, Pumpuru iela / Roadway 1 / Results overview



Maintenance factor: 0.85

Scale 1:329

Grid: 14 x 6 Points

Accompanying Street Elements: Roadway 1.

tarmac: R3, q0: 0.070

Selected Lighting Class: ME5

(All lighting performance requirements are met.)

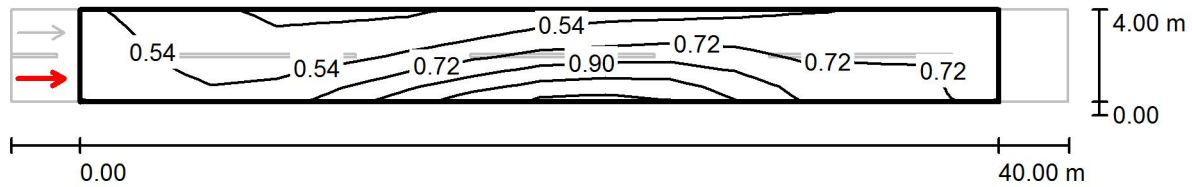
	L_{av} [cd/m ²]	U0	UI	TI [%]	SR
Calculated values:	0.67	0.51	0.46	14	0.89
Required values according to class:	≥ 0.50	≥ 0.35	≥ 0.40	≤ 15	≥ 0.50
Fulfilled/Not fulfilled:	✓	✓	✓	✓	✓

Assigned Observer (2 Pieces):

No.	Observer	Position [m]	L_{av} [cd/m ²]	U0	UI	TI [%]
1	Observer 1	(-60.000, 1.000, 1.500)	0.67	0.51	0.46	14
2	Observer 2	(-60.000, 3.000, 1.500)	0.71	0.51	0.53	11

Operator
Telephone
Fax
e-Mail

Demene, Pumpuru iela / Roadway 1 / Observer 1 / Isolines (L)



Values in Candela/m², Scale 1 : 329

Grid: 14 x 6 Points

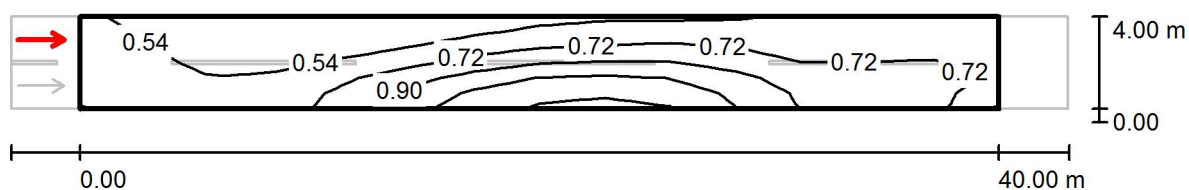
Observer Position: (-60.000 m, 1.000 m, 1.500 m)

tarmac: R3, q0: 0.070

	L_{av} [cd/m ²]	U0	UI	TI [%]
Calculated values:	0.67	0.51	0.46	14
Required values according to class ME5:	≥ 0.50	≥ 0.35	≥ 0.40	≤ 15
Fulfilled/Not fulfilled:	✓	✓	✓	✓

Operator
Telephone
Fax
e-Mail

Demene, Pumpuru iela / Roadway 1 / Observer 2 / Isolines (L)



Values in Candela/m², Scale 1 : 329

Grid: 14 x 6 Points

Observer Position: (-60.000 m, 3.000 m, 1.500 m)

tarmac: R3, q0: 0.070

	L_{av} [cd/m ²]	U0	UI	TI [%]
Calculated values:	0.71	0.51	0.53	11
Required values according to class ME5:	≥ 0.50	≥ 0.35	≥ 0.40	≤ 15
Fulfilled/Not fulfilled:	✓	✓	✓	✓

Operator
Telephone
Fax
e-Mail

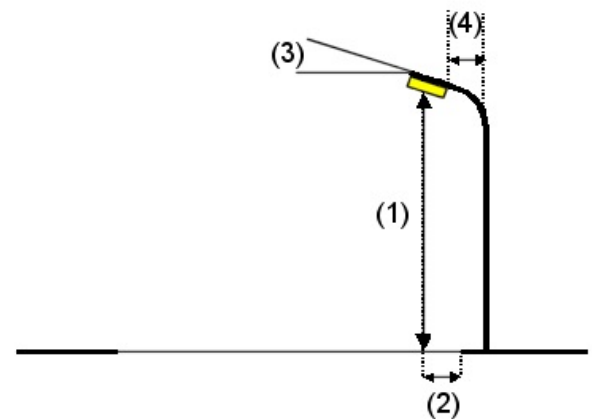
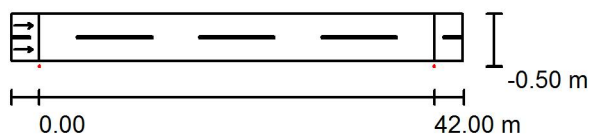
Demene, Ezeru iela / Planning data

Street Profile

Roadway 1 (Width: 5.000 m, Number of lanes: 2, tarmac: R3, q0: 0.070)

Maintenance factor: 0.85

Luminaire Arrangements



Luminaire:	RoadSpark SLIM 60W
Luminous flux (Luminaire):	6072 lm
Luminous flux (Lamps):	7440 lm
Luminaire Wattage:	60.0 W
Arrangement:	Single row, bottom
Pole Distance:	42.000 m
Mounting Height (1):	8.000 m
Height:	8.000 m
Overhang (2):	-0.500 m
Boom Angle (3):	0.0 °
Boom Length (4):	1.500 m

Maximum luminous intensities

at 70°:	457 cd/klm
at 80°:	96 cd/klm
at 90°:	12 cd/klm

Any direction forming the specified angle from the downward vertical, with the luminaire installed for use.

No luminous intensities above 90°.

Arrangement complies with luminous intensity class G3.

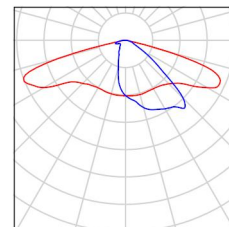
Arrangement complies with glare index class D.4.

Operator
Telephone
Fax
e-Mail

Demene, Ezeru iela / Luminaire parts list

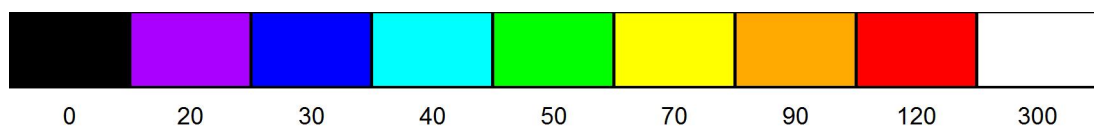
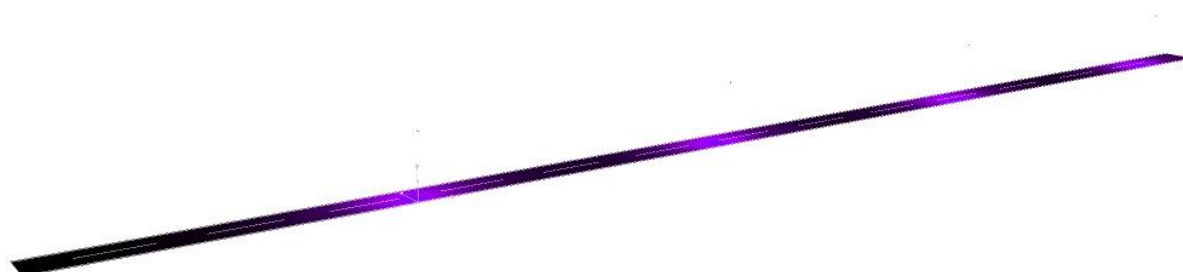
RoadSpark SLIM 60W
Article No.:
Luminous flux (Luminaire): 6072 lm
Luminous flux (Lamps): 7440 lm
Luminaire Wattage: 60.0 W
Luminaire classification according to CIE: 100
CIE flux code: 35 68 94 100 82
Fitting: 1 x Cree XP-G (Correction Factor 1.000).

See our luminaire
catalog for an image of
the luminaire.



Operator
Telephone
Fax
e-Mail

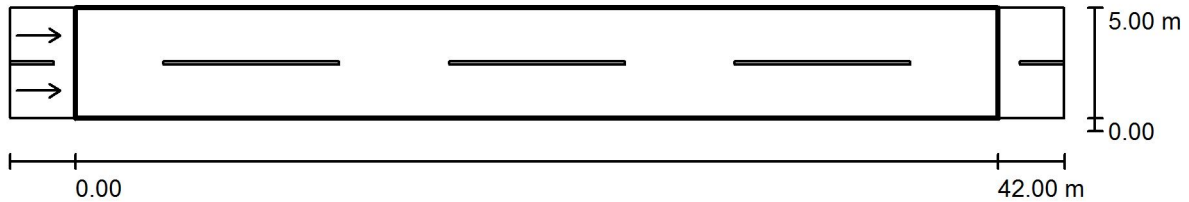
Demene, Ezeru iela / False Colour Rendering



lx

Operator
Telephone
Fax
e-Mail

Demene, Ezeru iela / Roadway 1 / Results overview



Maintenance factor: 0.85

Scale 1:344

Grid: 14 x 6 Points

Accompanying Street Elements: Roadway 1.

tarmac: R3, q0: 0.070

Selected Lighting Class: ME5

(All lighting performance requirements are met.)

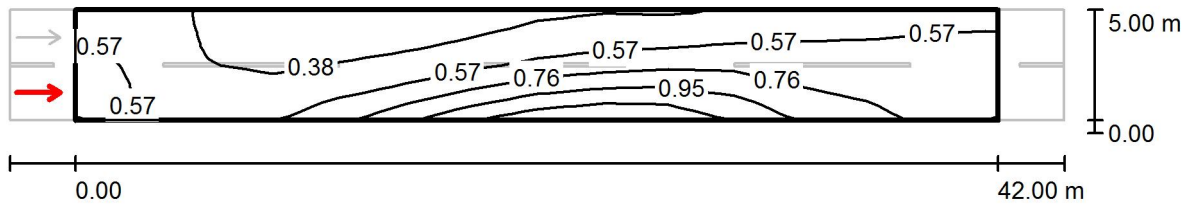
	L_{av} [cd/m ²]	U0	UI	TI [%]	SR
Calculated values:	0.59	0.45	0.41	15	0.82
Required values according to class:	≥ 0.50	≥ 0.35	≥ 0.40	≤ 15	≥ 0.50
Fulfilled/Not fulfilled:	✓	✓	✓	✓	✓

Assigned Observer (2 Pieces):

No.	Observer	Position [m]	L_{av} [cd/m ²]	U0	UI	TI [%]
1	Observer 1	(-60.000, 1.250, 1.500)	0.59	0.45	0.41	15
2	Observer 2	(-60.000, 3.750, 1.500)	0.64	0.45	0.54	11

Operator
Telephone
Fax
e-Mail

Demene, Ezeru iela / Roadway 1 / Observer 1 / Isolines (L)



Values in Candela/m², Scale 1 : 344

Grid: 14 x 6 Points

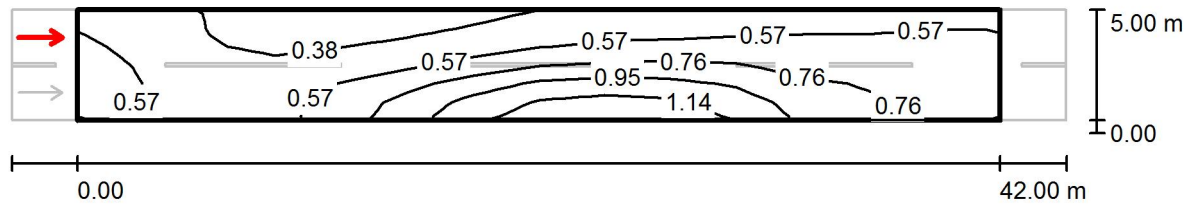
Observer Position: (-60.000 m, 1.250 m, 1.500 m)

tarmac: R3, q0: 0.070

	L_{av} [cd/m ²]	U0	UI	TI [%]
Calculated values:	0.59	0.45	0.41	15
Required values according to class ME5:	≥ 0.50	≥ 0.35	≥ 0.40	≤ 15
Fulfilled/Not fulfilled:	✓	✓	✓	✓

Operator
Telephone
Fax
e-Mail

Demene, Ezeru iela / Roadway 1 / Observer 2 / Isolines (L)



Values in Candela/m², Scale 1 : 344

Grid: 14 x 6 Points

Observer Position: (-60.000 m, 3.750 m, 1.500 m)

tarmac: R3, q0: 0.070

	L_{av} [cd/m ²]	U0	UI	TI [%]
Calculated values:	0.64	0.45	0.54	11
Required values according to class ME5:	≥ 0.50	≥ 0.35	≥ 0.40	≤ 15
Fulfilled/Not fulfilled:	✓	✓	✓	✓

Operator
Telephone
Fax
e-Mail

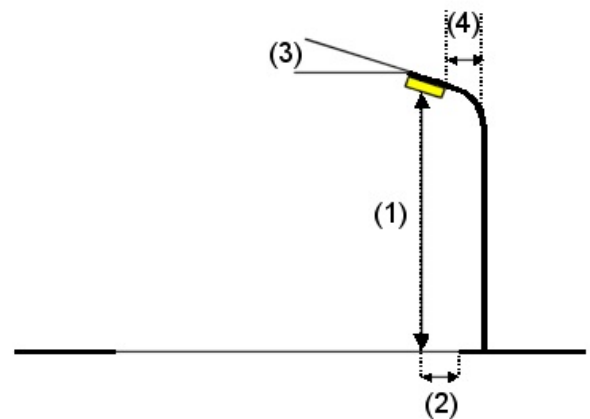
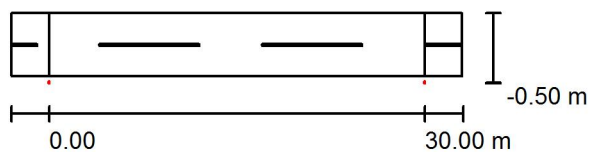
Teritorija pie Kultūras nama / Planning data

Street Profile

Roadway 1 (Width: 5.000 m, Number of lanes: 2, tarmac: R3, q0: 0.070)

Maintenance factor: 0.85

Luminaire Arrangements



Luminaire:	RoadSpark SLIM 60W
Luminous flux (Luminaire):	6072 lm
Luminous flux (Lamps):	7440 lm
Luminaire Wattage:	60.0 W
Arrangement:	Single row, bottom
Pole Distance:	30.000 m
Mounting Height (1):	8.000 m
Height:	8.000 m
Overhang (2):	-0.500 m
Boom Angle (3):	10.0 °
Boom Length (4):	1.500 m

Maximum luminous intensities

at 70°:	450 cd/klm
at 80°:	260 cd/klm
at 90°:	29 cd/klm

Any direction forming the specified angle from the downward vertical, with the luminaire installed for use.

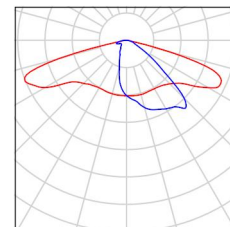
Arrangement complies with glare index class D.3.

Operator
Telephone
Fax
e-Mail

Teritorija pie Kultūras nama / Luminaire parts list

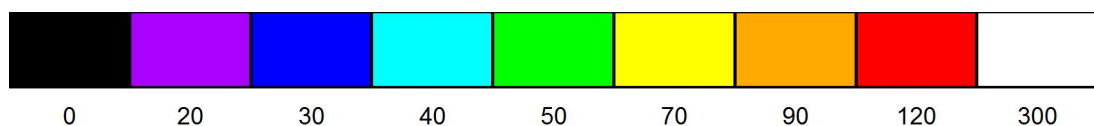
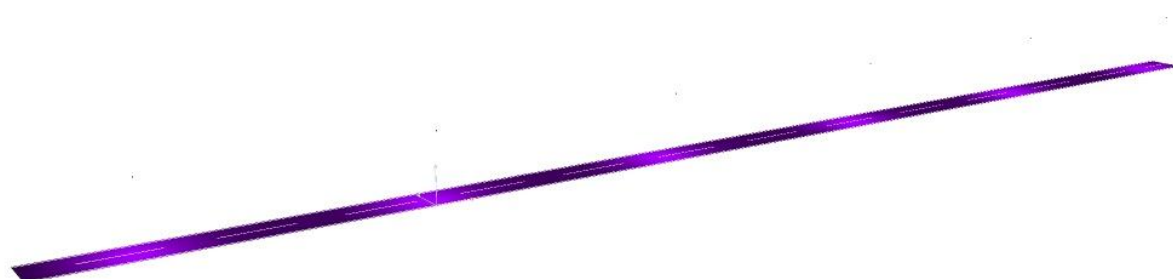
RoadSpark SLIM 60W
Article No.:
Luminous flux (Luminaire): 6072 lm
Luminous flux (Lamps): 7440 lm
Luminaire Wattage: 60.0 W
Luminaire classification according to CIE: 100
CIE flux code: 35 68 94 100 82
Fitting: 1 x Cree XP-G (Correction Factor 1.000).

See our luminaire
catalog for an image of
the luminaire.



Operator
Telephone
Fax
e-Mail

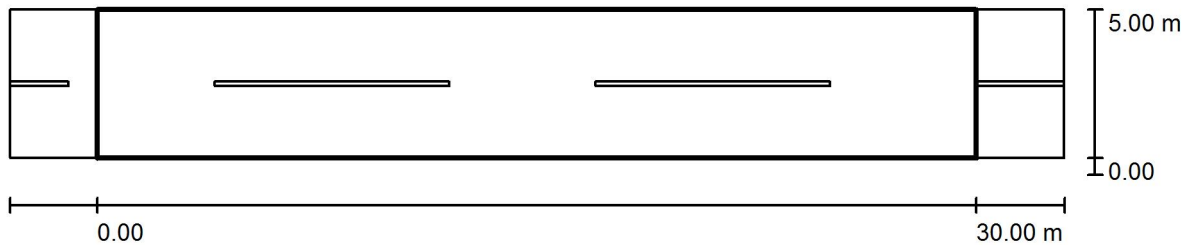
Teritorija pie Kultūras nama / False Colour Rendering



lx

Operator
Telephone
Fax
e-Mail

Teritorija pie Kultūras nama / Roadway 1 / Results overview



Maintenance factor: 0.85

Scale 1:258

Grid: 10 x 4 Points

Accompanying Street Elements: Roadway 1.

Selected Lighting Class: S3

(All lighting performance requirements are met.)

Calculated values:

Required values according to class:

Fulfilled/Not fulfilled:

E_{av} [lx]

11.25

≥ 7.50



E_{min} [lx]

6.98

≥ 1.50



Operator
Telephone
Fax
e-Mail

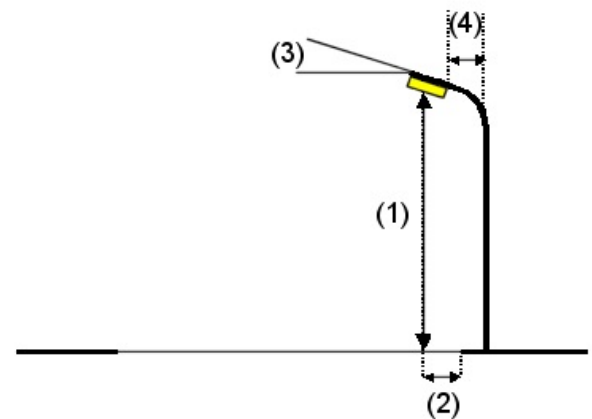
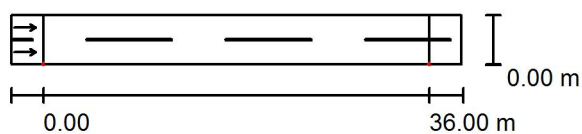
Dubna, Sporta iela / Planning data

Street Profile

Roadway 1 (Width: 4.500 m, Number of lanes: 2, tarmac: R3, q0: 0.070)

Maintenance factor: 0.85

Luminaire Arrangements



Luminaire:	RoadSpark SLIM 60W
Luminous flux (Luminaire):	6072 lm
Luminous flux (Lamps):	7440 lm
Luminaire Wattage:	60.0 W
Arrangement:	Single row, bottom
Pole Distance:	36.000 m
Mounting Height (1):	8.000 m
Height:	8.000 m
Overhang (2):	0.000 m
Boom Angle (3):	10.0 °
Boom Length (4):	1.000 m

Maximum luminous intensities

at 70°:	450 cd/klm
at 80°:	260 cd/klm
at 90°:	29 cd/klm

Any direction forming the specified angle from the downward vertical, with the luminaire installed for use.

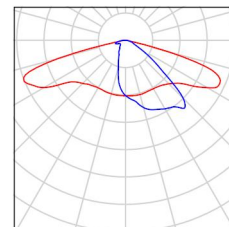
Arrangement complies with glare index class D.3.

Operator
Telephone
Fax
e-Mail

Dubna, Sporta iela / Luminaire parts list

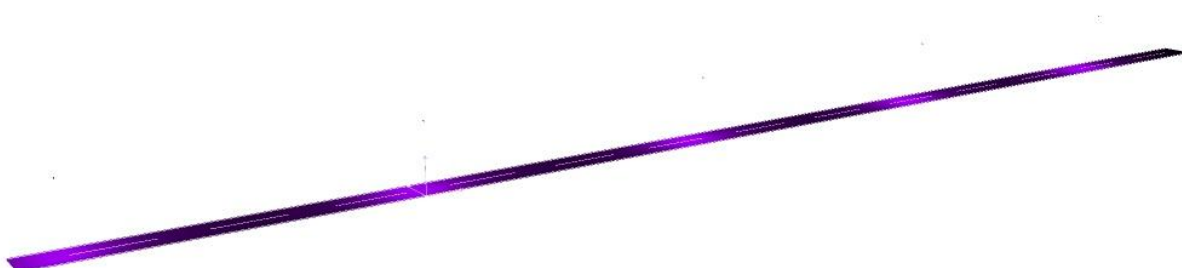
RoadSpark SLIM 60W
Article No.:
Luminous flux (Luminaire): 6072 lm
Luminous flux (Lamps): 7440 lm
Luminaire Wattage: 60.0 W
Luminaire classification according to CIE: 100
CIE flux code: 35 68 94 100 82
Fitting: 1 x Cree XP-G (Correction Factor 1.000).

See our luminaire
catalog for an image of
the luminaire.



Operator
Telephone
Fax
e-Mail

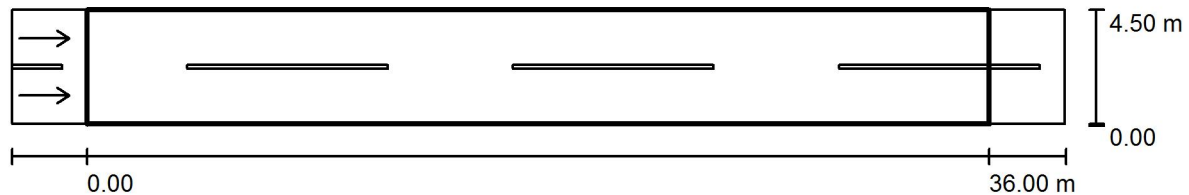
Dubna, Sporta iela / False Colour Rendering



0 20 30 40 50 70 90 120 300 lx

Operator
Telephone
Fax
e-Mail

Dubna, Sporta iela / Valuation Field Roadway 1 / Results overview



Maintenance factor: 0.85

Scale 1:301

Grid: 12 x 6 Points

Accompanying Street Elements: Roadway 1.

tarmac: R3, q0: 0.070

Selected Lighting Class: ME5

(All lighting performance requirements are met.)

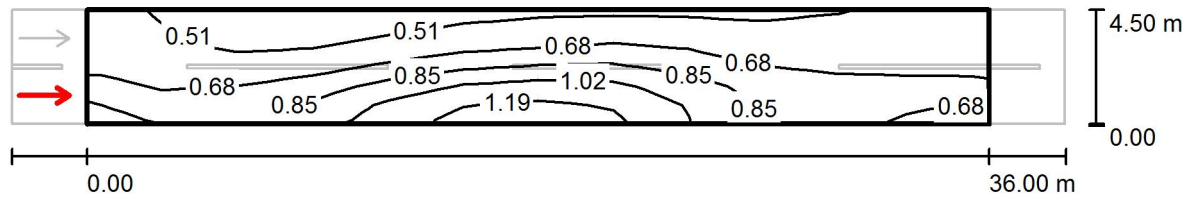
	L_{av} [cd/m ²]	U0	UI	TI [%]	SR
Calculated values:	0.72	0.54	0.59	13	0.77
Required values according to class:	≥ 0.50	≥ 0.35	≥ 0.40	≤ 15	≥ 0.50
Fulfilled/Not fulfilled:	✓	✓	✓	✓	✓

Assigned Observer (2 Pieces):

No.	Observer	Position [m]	L_{av} [cd/m ²]	U0	UI	TI [%]
1	Observer 1	(-60.000, 1.125, 1.500)	0.72	0.54	0.59	13
2	Observer 2	(-60.000, 3.375, 1.500)	0.77	0.58	0.70	11

Operator
Telephone
Fax
e-Mail

Dubna, Sporta iela / Valuation Field Roadway 1 / Observer 1 / Isolines (L)



Values in Candela/m², Scale 1 : 301

Grid: 12 x 6 Points

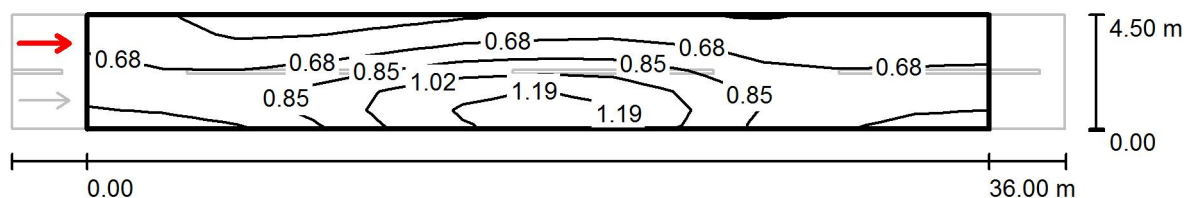
Observer Position: (-60.000 m, 1.125 m, 1.500 m)

tarmac: R3, q0: 0.070

	L_{av} [cd/m ²]	U0	UI	TI [%]
Calculated values:	0.72	0.54	0.59	13
Required values according to class ME5:	≥ 0.50	≥ 0.35	≥ 0.40	≤ 15
Fulfilled/Not fulfilled:	✓	✓	✓	✓

Operator
Telephone
Fax
e-Mail

Dubna, Sporta iela / Valuation Field Roadway 1 / Observer 2 / Isolines (L)



Values in Candela/m², Scale 1 : 301

Grid: 12 x 6 Points

Observer Position: (-60.000 m, 3.375 m, 1.500 m)

tarmac: R3, q0: 0.070

	L_{av} [cd/m²]	U0	UI	TI [%]
Calculated values:	0.77	0.58	0.70	11
Required values according to class ME5:	≥ 0.50	≥ 0.35	≥ 0.40	≤ 15
Fulfilled/Not fulfilled:	✓	✓	✓	✓

Operator
Telephone
Fax
e-Mail

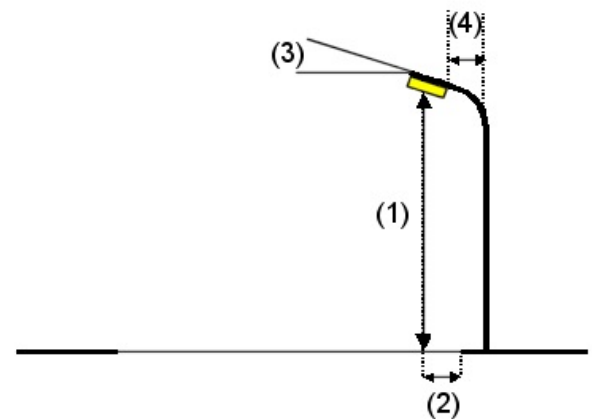
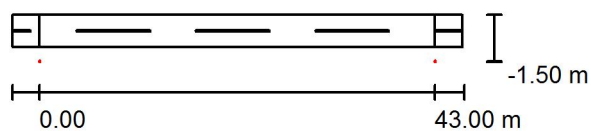
Dubna, Nākotnes iela (pie ēkas nr. 1A; 3; 5; 7; 9) / Planning data

Street Profile

Roadway 1 (Width: 3.500 m, Number of lanes: 2, tarmac: R3, q0: 0.070)

Maintenance factor: 0.85

Luminaire Arrangements



Luminaire:	RoadSpark SLIM 60W
Luminous flux (Luminaire):	6072 lm
Luminous flux (Lamps):	7440 lm
Luminaire Wattage:	60.0 W
Arrangement:	Single row, bottom
Pole Distance:	43.000 m
Mounting Height (1):	8.000 m
Height:	8.000 m
Overhang (2):	-1.500 m
Boom Angle (3):	5.0 °
Boom Length (4):	1.000 m

Maximum luminous intensities

at 70°:	465 cd/klm
at 80°:	175 cd/klm
at 90°:	18 cd/klm

Any direction forming the specified angle from the downward vertical, with the luminaire installed for use.

No luminous intensities above 95°.

Arrangement complies with luminous intensity class G1.

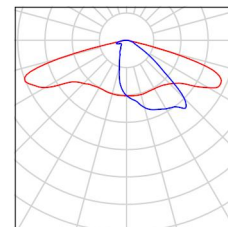
Arrangement complies with glare index class D.4.

Operator
Telephone
Fax
e-Mail

Dubna, Nākotnes iela (pie ēkas nr. 1A; 3; 5; 7; 9) / Luminaire parts list

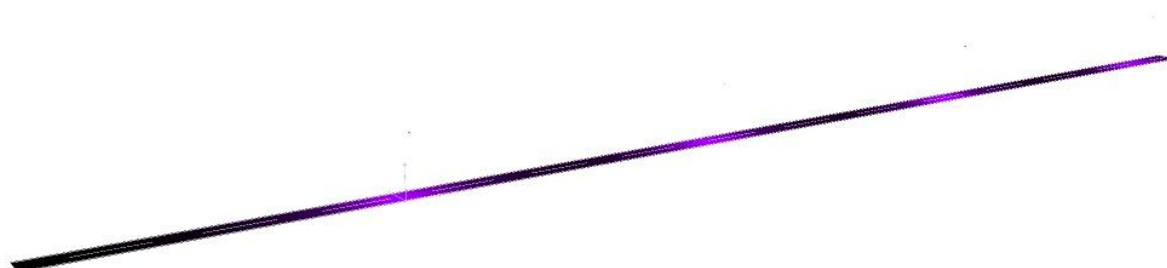
RoadSpark SLIM 60W
Article No.:
Luminous flux (Luminaire): 6072 lm
Luminous flux (Lamps): 7440 lm
Luminaire Wattage: 60.0 W
Luminaire classification according to CIE: 100
CIE flux code: 35 68 94 100 82
Fitting: 1 x Cree XP-G (Correction Factor 1.000).

See our luminaire
catalog for an image of
the luminaire.



Operator
Telephone
Fax
e-Mail

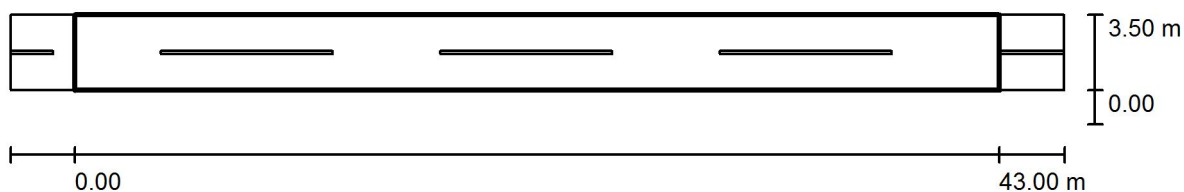
Dubna, Nākotnes iela (pie ēkas nr. 1A; 3; 5; 7; 9) / False Colour Rendering



0 20 30 40 50 70 90 120 300 lx

Operator
Telephone
Fax
e-Mail

Dubna, Nākotnes iela (pie ēkas nr. 1A; 3; 5; 7; 9) / Valuation Field Roadway 1 / Results overview



Maintenance factor: 0.85

Scale 1:351

Grid: 15 x 3 Points

Accompanying Street Elements: Roadway 1.

Selected Lighting Class: S3

(All lighting performance requirements are met.)

Calculated values:

Required values according to class:

Fulfilled/Not fulfilled:

E_{av} [lx]

8.34

≥ 7.50



E_{min} [lx]

3.20

≥ 1.50



Operator
Telephone
Fax
e-Mail

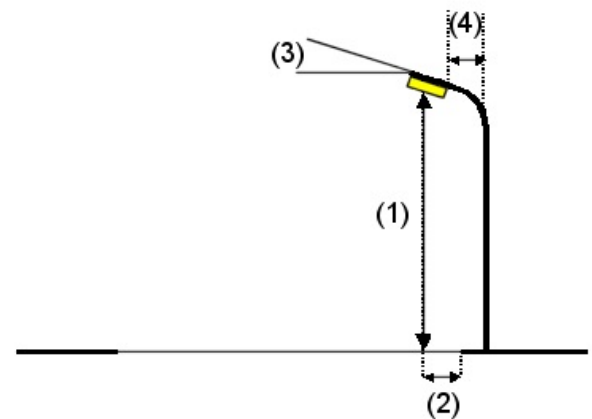
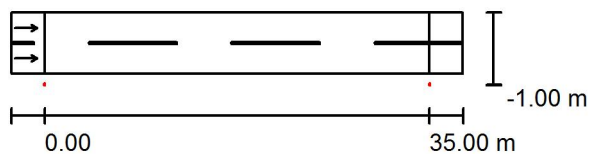
Silene, Skaiska iela / Planning data

Street Profile

Roadway 1 (Width: 5.500 m, Number of lanes: 2, tarmac: R3, q0: 0.070)

Maintenance factor: 0.85

Luminaire Arrangements



Luminaire:	RoadSpark SLIM 60W
Luminous flux (Luminaire):	6072 lm
Luminous flux (Lamps):	7440 lm
Luminaire Wattage:	60.0 W
Arrangement:	Single row, bottom
Pole Distance:	35.000 m
Mounting Height (1):	8.000 m
Height:	8.000 m
Overhang (2):	-1.000 m
Boom Angle (3):	5.0 °
Boom Length (4):	1.000 m

Maximum luminous intensities

at 70°:	465 cd/klm
at 80°:	175 cd/klm
at 90°:	18 cd/klm

Any direction forming the specified angle from the downward vertical, with the luminaire installed for use.

No luminous intensities above 95°.

Arrangement complies with luminous intensity class G1.

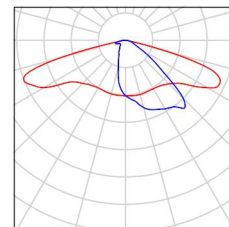
Arrangement complies with glare index class D.4.

Operator
Telephone
Fax
e-Mail

Silene, Skaiska iela / Luminaire parts list

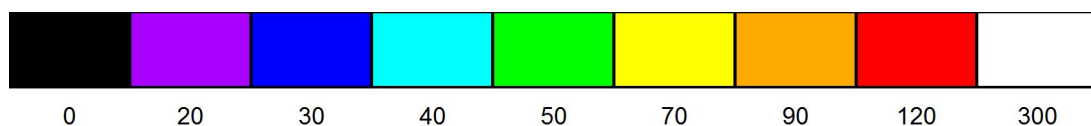
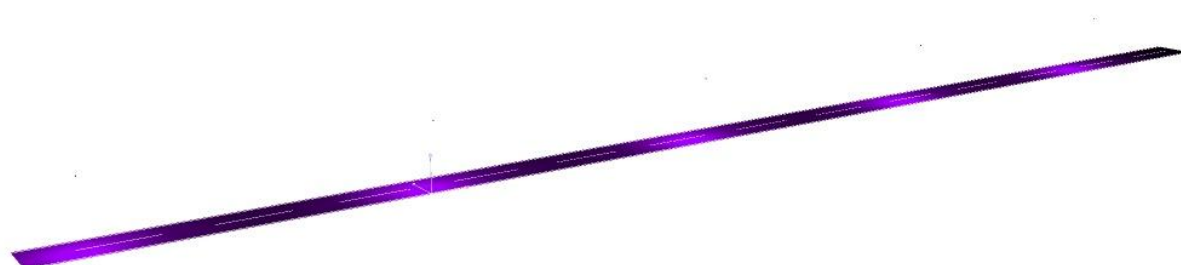
RoadSpark SLIM 60W
Article No.:
Luminous flux (Luminaire): 6072 lm
Luminous flux (Lamps): 7440 lm
Luminaire Wattage: 60.0 W
Luminaire classification according to CIE: 100
CIE flux code: 35 68 94 100 82
Fitting: 1 x Cree XP-G (Correction Factor 1.000).

See our luminaire
catalog for an image of
the luminaire.



Operator
Telephone
Fax
e-Mail

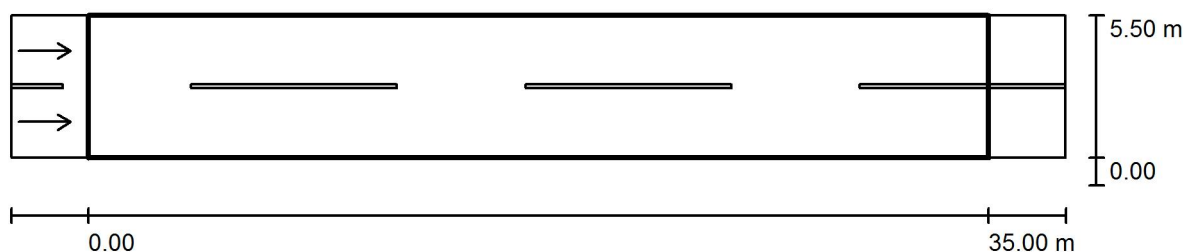
Silene, Skaiska iela / False Colour Rendering



lx

Operator
Telephone
Fax
e-Mail

Silene, Skaiska iela / Valuation Field Roadway 1 / Results overview



Maintenance factor: 0.85

Scale 1:294

Grid: 12 x 6 Points

Accompanying Street Elements: Roadway 1.

tarmac: R3, q0: 0.070

Selected Lighting Class: ME5

(All lighting performance requirements are met.)

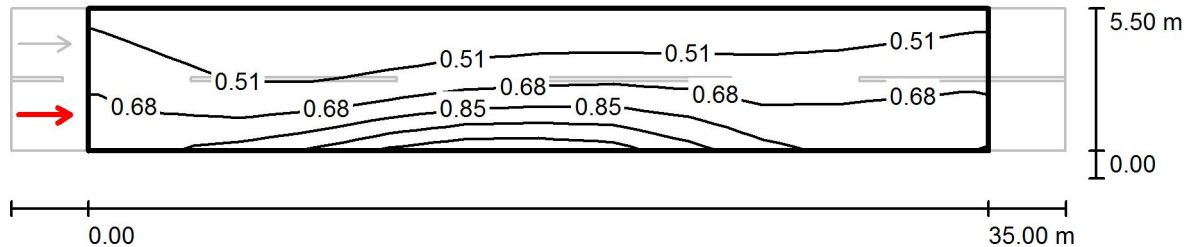
	L_{av} [cd/m ²]	U0	UI	TI [%]	SR
Calculated values:	0.63	0.57	0.68	14	0.80
Required values according to class:	≥ 0.50	≥ 0.35	≥ 0.40	≤ 15	≥ 0.50
Fulfilled/Not fulfilled:	✓	✓	✓	✓	✓

Assigned Observer (2 Pieces):

No.	Observer	Position [m]	L_{av} [cd/m ²]	U0	UI	TI [%]
1	Observer 1	(-60.000, 1.375, 1.500)	0.63	0.58	0.68	14
2	Observer 2	(-60.000, 4.125, 1.500)	0.69	0.57	0.78	10

Operator
Telephone
Fax
e-Mail

Silene, Skaiska iela / Valuation Field Roadway 1 / Observer 1 / Isolines (L)



Values in Candela/m², Scale 1 : 294

Grid: 12 x 6 Points

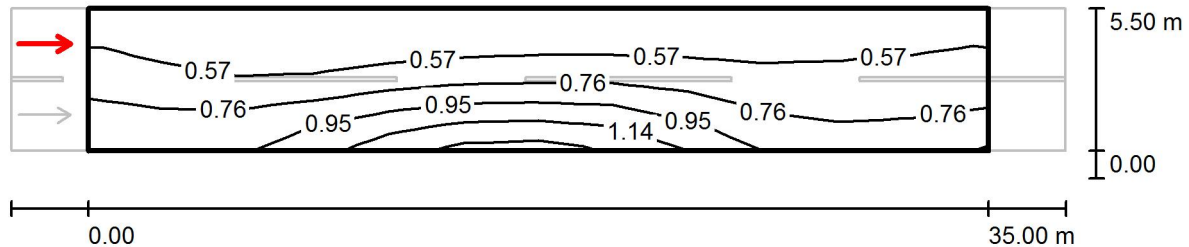
Observer Position: (-60.000 m, 1.375 m, 1.500 m)

tarmac: R3, q0: 0.070

	L_{av} [cd/m ²]	U0	UI	TI [%]
Calculated values:	0.63	0.58	0.68	14
Required values according to class ME5:	≥ 0.50	≥ 0.35	≥ 0.40	≤ 15
Fulfilled/Not fulfilled:	✓	✓	✓	✓

Operator
Telephone
Fax
e-Mail

Silene, Skaiska iela / Valuation Field Roadway 1 / Observer 2 / Isolines (L)



Values in Candela/m², Scale 1 : 294

Grid: 12 x 6 Points

Observer Position: (-60.000 m, 4.125 m, 1.500 m)

tarmac: R3, q0: 0.070

	L_{av} [cd/m ²]	U0	UI	TI [%]
Calculated values:	0.69	0.57	0.78	10
Required values according to class ME5:	≥ 0.50	≥ 0.35	≥ 0.40	≤ 15
Fulfilled/Not fulfilled:	✓	✓	✓	✓

Operator
Telephone
Fax
e-Mail

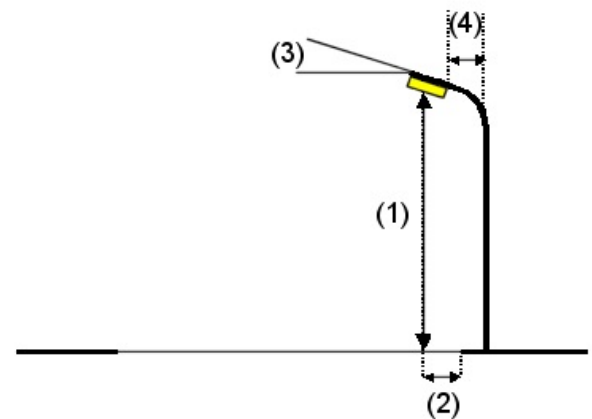
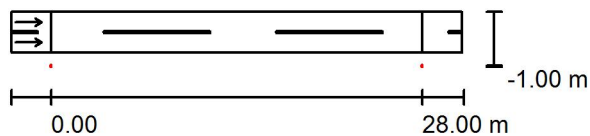
Silene, Aizupes iela (pie pasta nodaļas) / Planning data

Street Profile

Roadway 1 (Width: 3.000 m, Number of lanes: 2, tarmac: R3, q0: 0.070)

Maintenance factor: 0.85

Luminaire Arrangements



Luminaire:	RoadSpark SLIM 60W
Luminous flux (Luminaire):	6072 lm
Luminous flux (Lamps):	7440 lm
Luminaire Wattage:	60.0 W
Arrangement:	Single row, bottom
Pole Distance:	28.000 m
Mounting Height (1):	8.000 m
Height:	8.000 m
Overhang (2):	-1.000 m
Boom Angle (3):	5.0 °
Boom Length (4):	1.000 m

Maximum luminous intensities

at 70°:	465 cd/klm
at 80°:	175 cd/klm
at 90°:	18 cd/klm

Any direction forming the specified angle from the downward vertical, with the luminaire installed for use.

No luminous intensities above 95°.

Arrangement complies with luminous intensity class G1.

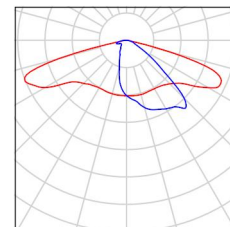
Arrangement complies with glare index class D.4.

Operator
Telephone
Fax
e-Mail

Silene, Aizupes iela (pie pasta nodaļas) / Luminaire parts list

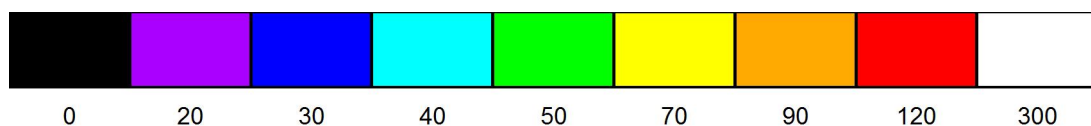
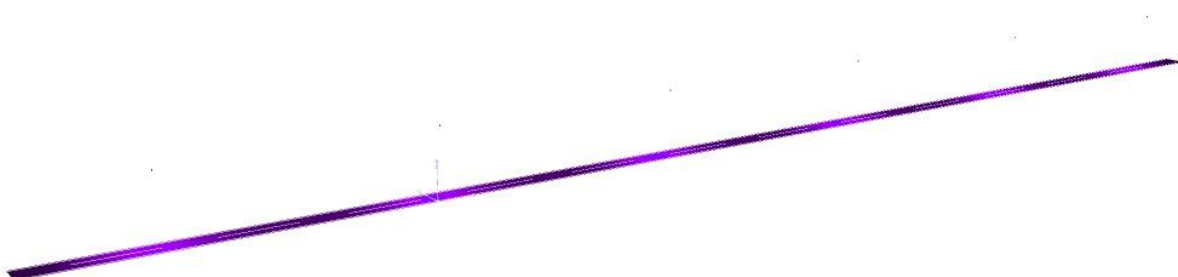
RoadSpark SLIM 60W
Article No.:
Luminous flux (Luminaire): 6072 lm
Luminous flux (Lamps): 7440 lm
Luminaire Wattage: 60.0 W
Luminaire classification according to CIE: 100
CIE flux code: 35 68 94 100 82
Fitting: 1 x Cree XP-G (Correction Factor 1.000).

See our luminaire
catalog for an image of
the luminaire.



Operator
Telephone
Fax
e-Mail

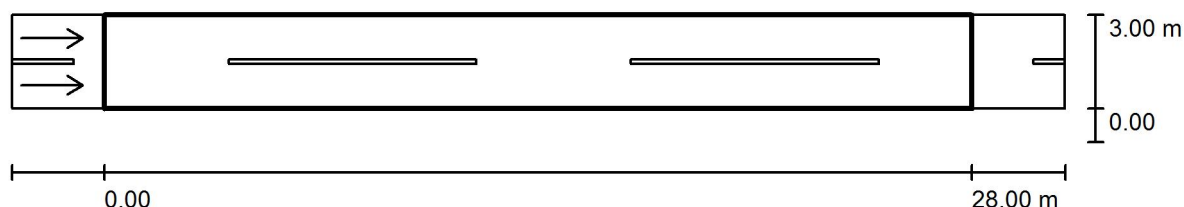
Silene, Aizupes iela (pie pasta nodaļas) / False Colour Rendering



0 20 30 40 50 70 90 120 300 lx

Operator
Telephone
Fax
e-Mail

Silene, Aizupes iela (pie pasta nodaļas) / Valuation Field Roadway 1 / Results overview



Maintenance factor: 0.85

Scale 1:244

Grid: 10 x 6 Points

Accompanying Street Elements: Roadway 1.

tarmac: R3, q0: 0.070

Selected Lighting Class: ME5

(All lighting performance requirements are met.)

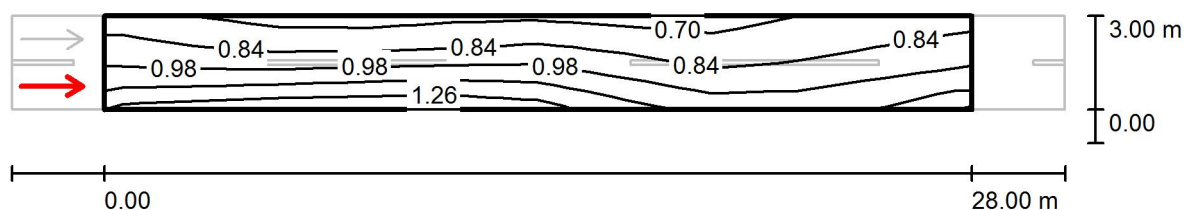
	L_{av} [cd/m ²]	U0	UI	TI [%]	SR
Calculated values:	0.93	0.68	0.79	11	0.93
Required values according to class:	≥ 0.50	≥ 0.35	≥ 0.40	≤ 15	≥ 0.50
Fulfilled/Not fulfilled:	✓	✓	✓	✓	✓

Assigned Observer (2 Pieces):

No.	Observer	Position [m]	L_{av} [cd/m ²]	U0	UI	TI [%]
1	Observer 1	(-60.000, 0.750, 1.500)	0.93	0.69	0.79	11
2	Observer 2	(-60.000, 2.250, 1.500)	1.00	0.68	0.82	9

Operator
Telephone
Fax
e-Mail

**Silene, Aizupes iela (pie pasta nodaļas) / Valuation Field Roadway 1 / Observer 1 /
Isolines (L)**



Values in Candela/m², Scale 1 : 244

Grid: 10 x 6 Points

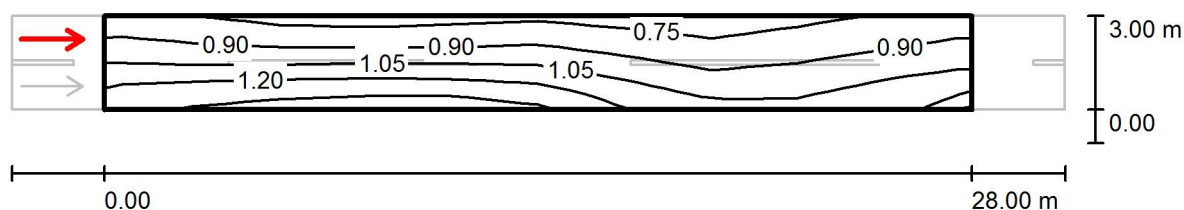
Observer Position: (-60.000 m, 0.750 m, 1.500 m)

tarmac: R3, q0: 0.070

	L_{av} [cd/m ²]	U0	UI	TI [%]
Calculated values:	0.93	0.69	0.79	11
Required values according to class ME5:	≥ 0.50	≥ 0.35	≥ 0.40	≤ 15
Fulfilled/Not fulfilled:	✓	✓	✓	✓

Operator
Telephone
Fax
e-Mail

**Silene, Aizupes iela (pie pasta nodaļas) / Valuation Field Roadway 1 / Observer 2 /
Isolines (L)**



Values in Candela/m², Scale 1 : 244

Grid: 10 x 6 Points

Observer Position: (-60.000 m, 2.250 m, 1.500 m)

tarmac: R3, q0: 0.070

	L_{av} [cd/m ²]	U0	UI	TI [%]
Calculated values:	1.00	0.68	0.82	9
Required values according to class ME5:	≥ 0.50	≥ 0.35	≥ 0.40	≤ 15
Fulfilled/Not fulfilled:	✓	✓	✓	✓

Operator
Telephone
Fax
e-Mail

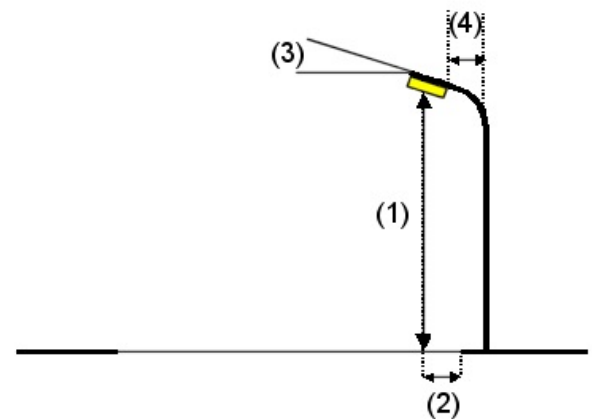
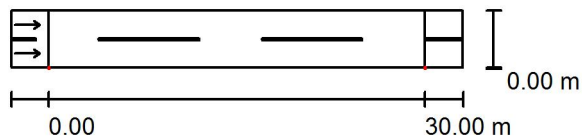
Silene, Skolas iela / Planning data

Street Profile

Roadway 1 (Width: 4.500 m, Number of lanes: 2, tarmac: R3, q0: 0.070)

Maintenance factor: 0.85

Luminaire Arrangements



Luminaire:	RoadSpark SLIM 60W
Luminous flux (Luminaire):	6072 lm
Luminous flux (Lamps):	7440 lm
Luminaire Wattage:	60.0 W
Arrangement:	Single row, bottom
Pole Distance:	30.000 m
Mounting Height (1):	8.000 m
Height:	8.000 m
Overhang (2):	0.000 m
Boom Angle (3):	5.0 °
Boom Length (4):	1.000 m

Maximum luminous intensities

at 70°:	465 cd/klm
at 80°:	175 cd/klm
at 90°:	18 cd/klm

Any direction forming the specified angle from the downward vertical, with the luminaire installed for use.

No luminous intensities above 95°.

Arrangement complies with luminous intensity class G1.

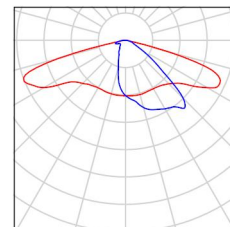
Arrangement complies with glare index class D.4.

Operator
Telephone
Fax
e-Mail

Silene, Skolas iela / Luminaire parts list

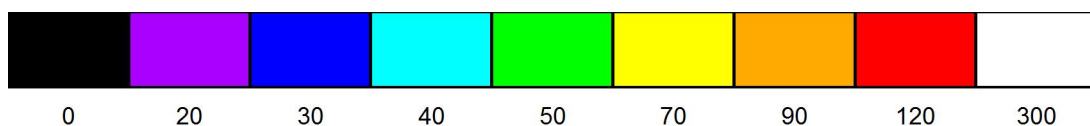
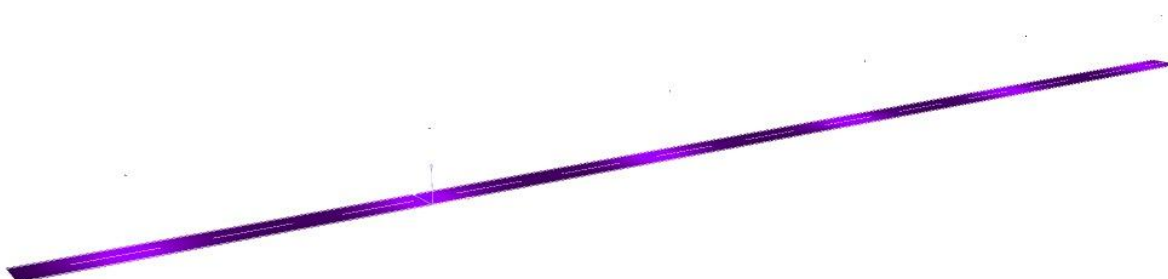
RoadSpark SLIM 60W
Article No.:
Luminous flux (Luminaire): 6072 lm
Luminous flux (Lamps): 7440 lm
Luminaire Wattage: 60.0 W
Luminaire classification according to CIE: 100
CIE flux code: 35 68 94 100 82
Fitting: 1 x Cree XP-G (Correction Factor 1.000).

See our luminaire
catalog for an image of
the luminaire.



Operator
Telephone
Fax
e-Mail

Silene, Skolas iela / False Colour Rendering



lx

Operator
Telephone
Fax
e-Mail

Silene, Skolas iela / Valuation Field Roadway 1 / Results overview



Maintenance factor: 0.85

Scale 1:258

Grid: 10 x 6 Points

Accompanying Street Elements: Roadway 1.

tarmac: R3, q0: 0.070

Selected Lighting Class: ME5

(All lighting performance requirements are met.)

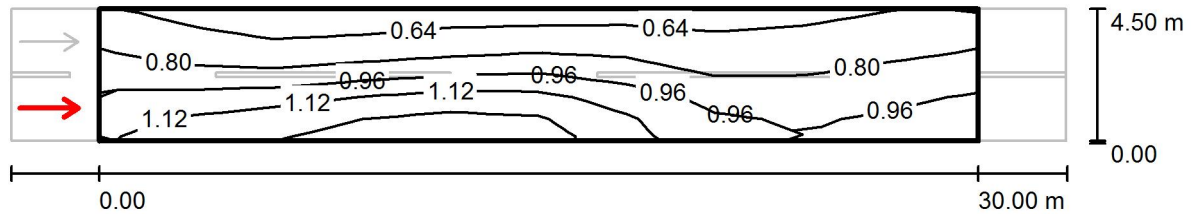
	L_{av} [cd/m ²]	U0	UI	TI [%]	SR
Calculated values:	0.89	0.62	0.72	11	0.80
Required values according to class:	≥ 0.50	≥ 0.35	≥ 0.40	≤ 15	≥ 0.50
Fulfilled/Not fulfilled:	✓	✓	✓	✓	✓

Assigned Observer (2 Pieces):

No.	Observer	Position [m]	L_{av} [cd/m ²]	U0	UI	TI [%]
1	Observer 1	(-60.000, 1.125, 1.500)	0.89	0.62	0.72	11
2	Observer 2	(-60.000, 3.375, 1.500)	0.95	0.64	0.84	9

Operator
Telephone
Fax
e-Mail

Silene, Skolas iela / Valuation Field Roadway 1 / Observer 1 / Isolines (L)



Values in Candela/m², Scale 1 : 258

Grid: 10 x 6 Points

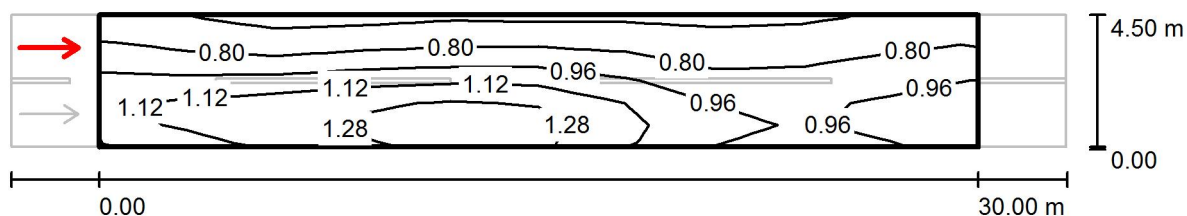
Observer Position: (-60.000 m, 1.125 m, 1.500 m)

tarmac: R3, q0: 0.070

	L_{av} [cd/m ²]	U0	UI	TI [%]
Calculated values:	0.89	0.62	0.72	11
Required values according to class ME5:	≥ 0.50	≥ 0.35	≥ 0.40	≤ 15
Fulfilled/Not fulfilled:	✓	✓	✓	✓

Operator
Telephone
Fax
e-Mail

Silene, Skolas iela / Valuation Field Roadway 1 / Observer 2 / Isolines (L)



Values in Candela/m², Scale 1 : 258

Grid: 10 x 6 Points

Observer Position: (-60.000 m, 3.375 m, 1.500 m)

tarmac: R3, q0: 0.070

	L_{av} [cd/m ²]	U0	UI	TI [%]
Calculated values:	0.95	0.64	0.84	9
Required values according to class ME5:	≥ 0.50	≥ 0.35	≥ 0.40	≤ 15
Fulfilled/Not fulfilled:	✓	✓	✓	✓

Operator
Telephone
Fax
e-Mail

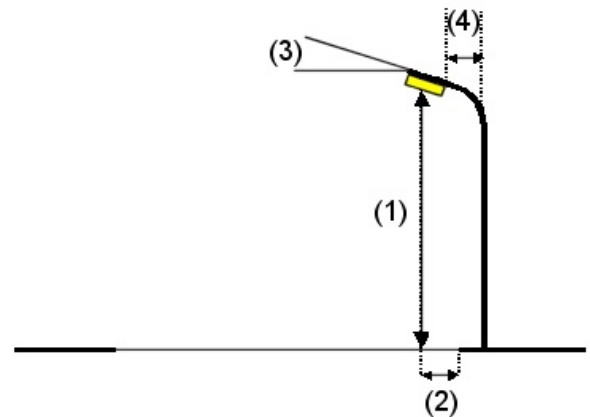
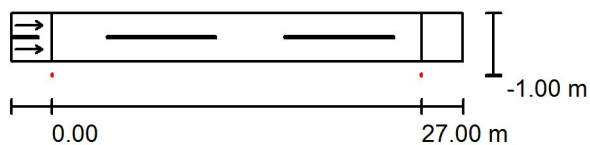
Silene, Dīķu iela / Planning data

Street Profile

Roadway 1 (Width: 3.500 m, Number of lanes: 2, tarmac: R3, q0: 0.070)

Maintenance factor: 0.85

Luminaire Arrangements



Luminaire:	RoadSpark SLIM 60W
Luminous flux (Luminaire):	6072 lm
Luminous flux (Lamps):	7440 lm
Luminaire Wattage:	60.0 W
Arrangement:	Single row, bottom
Pole Distance:	27.000 m
Mounting Height (1):	8.000 m
Height:	8.000 m
Overhang (2):	-1.000 m
Boom Angle (3):	5.0 °
Boom Length (4):	1.000 m

Maximum luminous intensities

at 70°:	465 cd/klm
at 80°:	175 cd/klm
at 90°:	18 cd/klm

Any direction forming the specified angle from the downward vertical, with the luminaire installed for use.

No luminous intensities above 95°.

Arrangement complies with luminous intensity class G1.

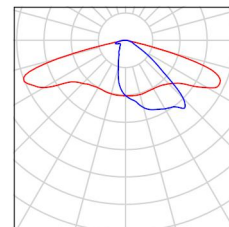
Arrangement complies with glare index class D.4.

Operator
Telephone
Fax
e-Mail

Silene, Dīķu iela / Luminaire parts list

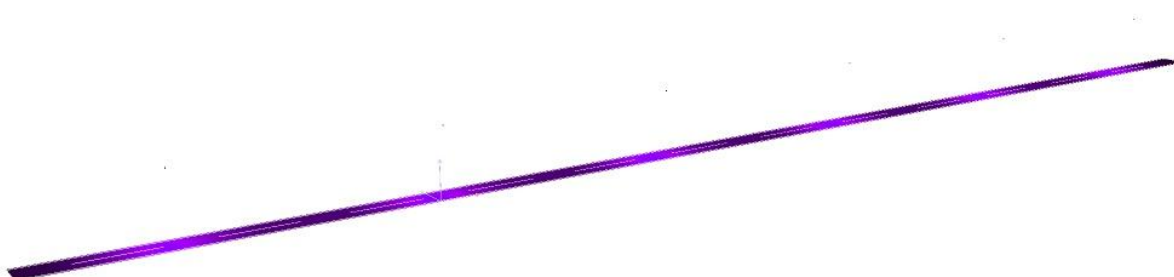
RoadSpark SLIM 60W
Article No.:
Luminous flux (Luminaire): 6072 lm
Luminous flux (Lamps): 7440 lm
Luminaire Wattage: 60.0 W
Luminaire classification according to CIE: 100
CIE flux code: 35 68 94 100 82
Fitting: 1 x Cree XP-G (Correction Factor 1.000).

See our luminaire
catalog for an image of
the luminaire.



Operator
Telephone
Fax
e-Mail

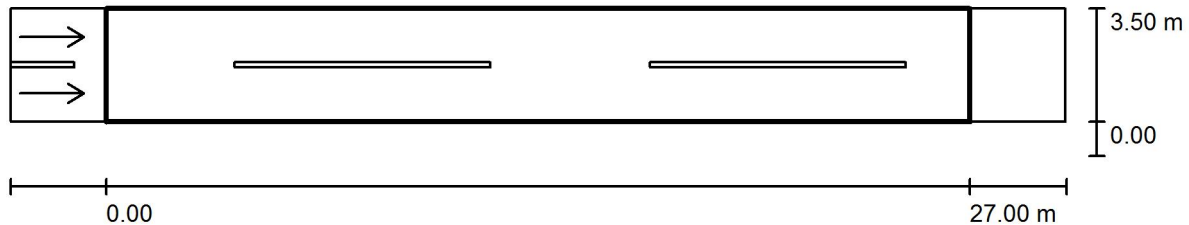
Silene, Dīķu iela / False Colour Rendering



0 20 30 40 50 70 90 120 300 lx

Operator
Telephone
Fax
e-Mail

Silene, Dīķu iela / Valuation Field Roadway 1 / Results overview



Maintenance factor: 0.85

Scale 1:236

Grid: 10 x 6 Points

Accompanying Street Elements: Roadway 1.

tarmac: R3, q0: 0.070

Selected Lighting Class: ME5

(All lighting performance requirements are met.)

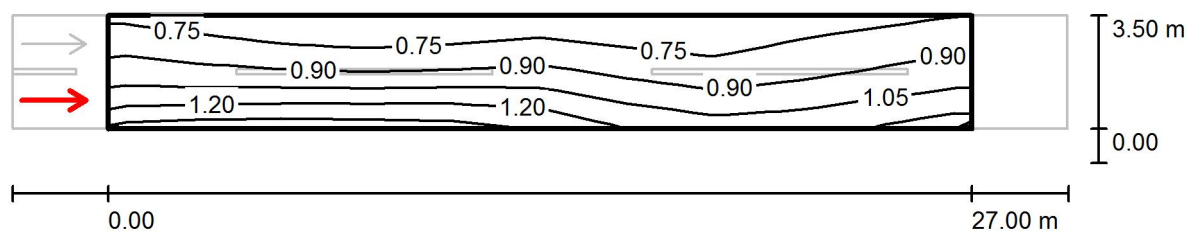
	L_{av} [cd/m ²]	U0	UI	TI [%]	SR
Calculated values:	0.93	0.63	0.79	11	0.91
Required values according to class:	≥ 0.50	≥ 0.35	≥ 0.40	≤ 15	≥ 0.50
Fulfilled/Not fulfilled:	✓	✓	✓	✓	✓

Assigned Observer (2 Pieces):

No.	Observer	Position [m]	L_{av} [cd/m ²]	U0	UI	TI [%]
1	Observer 1	(-60.000, 0.875, 1.500)	0.93	0.66	0.81	11
2	Observer 2	(-60.000, 2.625, 1.500)	1.00	0.63	0.79	9

Operator
Telephone
Fax
e-Mail

Silene, Dīķu iela / Valuation Field Roadway 1 / Observer 1 / Isolines (L)



Values in Candela/m², Scale 1 : 236

Grid: 10 x 6 Points

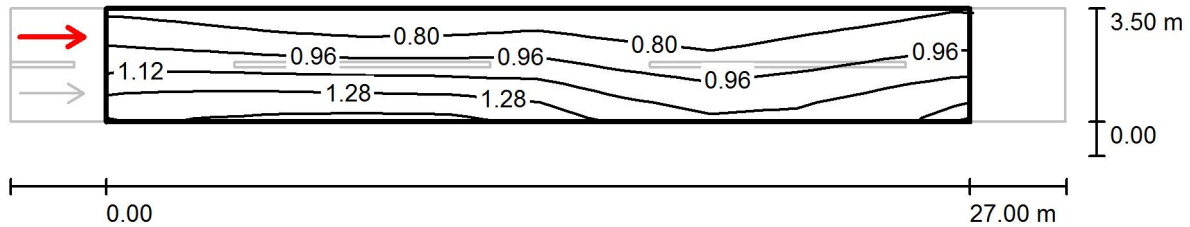
Observer Position: (-60.000 m, 0.875 m, 1.500 m)

tarmac: R3, q0: 0.070

	L_{av} [cd/m ²]	U0	UI	TI [%]
Calculated values:	0.93	0.66	0.81	11
Required values according to class ME5:	≥ 0.50	≥ 0.35	≥ 0.40	≤ 15
Fulfilled/Not fulfilled:	✓	✓	✓	✓

Operator
Telephone
Fax
e-Mail

Silene, Dīķu iela / Valuation Field Roadway 1 / Observer 2 / Isolines (L)



Values in Candela/m², Scale 1 : 236

Grid: 10 x 6 Points

Observer Position: (-60.000 m, 2.625 m, 1.500 m)

tarmac: R3, q0: 0.070

	L_{av} [cd/m ²]	U0	UI	TI [%]
Calculated values:	1.00	0.63	0.79	9
Required values according to class ME5:	≥ 0.50	≥ 0.35	≥ 0.40	≤ 15
Fulfilled/Not fulfilled:	✓	✓	✓	✓

Operator
Telephone
Fax
e-Mail

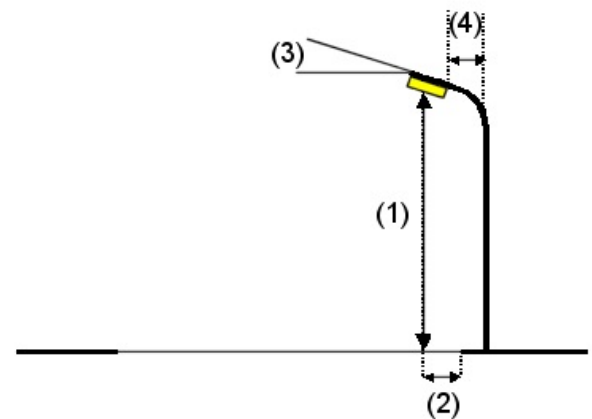
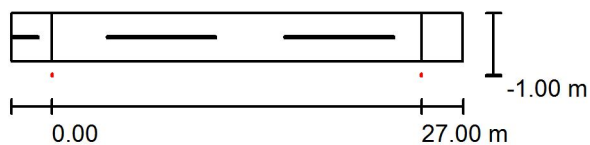
Silene, Teritorija pie skolas (skolas iela 19) / Planning data

Street Profile

Roadway 1 (Width: 3.500 m, Number of lanes: 2, tarmac: R3, q0: 0.070)

Maintenance factor: 0.85

Luminaire Arrangements



Luminaire:	RoadSpark SLIM 60W
Luminous flux (Luminaire):	6072 lm
Luminous flux (Lamps):	7440 lm
Luminaire Wattage:	60.0 W
Arrangement:	Single row, bottom
Pole Distance:	27.000 m
Mounting Height (1):	8.000 m
Height:	8.000 m
Overhang (2):	-1.000 m
Boom Angle (3):	5.0 °
Boom Length (4):	1.000 m

Maximum luminous intensities

at 70°:	465 cd/klm
at 80°:	175 cd/klm
at 90°:	18 cd/klm

Any direction forming the specified angle from the downward vertical, with the luminaire installed for use.

No luminous intensities above 95°.

Arrangement complies with luminous intensity class G1.

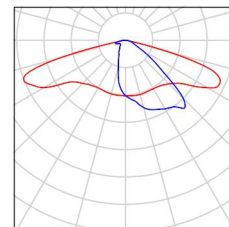
Arrangement complies with glare index class D.4.

Operator
Telephone
Fax
e-Mail

Silene, Teritorija pie skolas (skolas iela 19) / Luminaire parts list

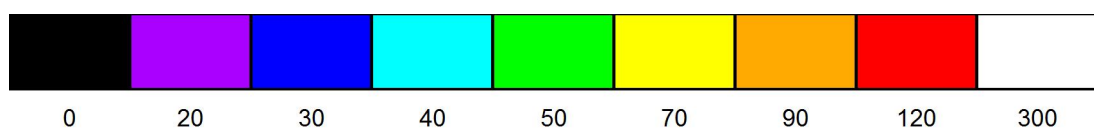
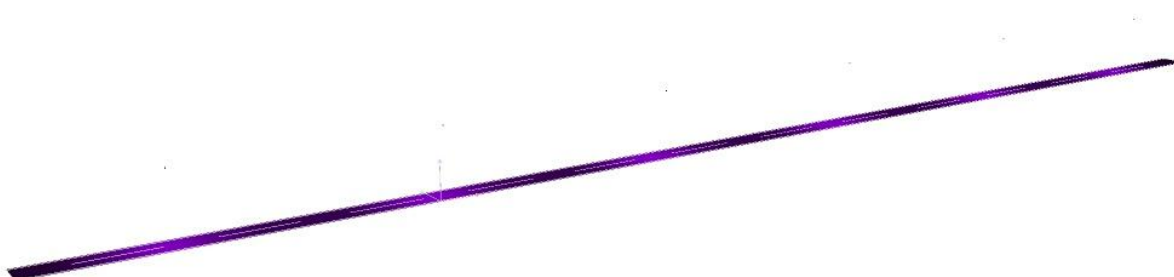
RoadSpark SLIM 60W
Article No.:
Luminous flux (Luminaire): 6072 lm
Luminous flux (Lamps): 7440 lm
Luminaire Wattage: 60.0 W
Luminaire classification according to CIE: 100
CIE flux code: 35 68 94 100 82
Fitting: 1 x Cree XP-G (Correction Factor 0.700).

See our luminaire
catalog for an image of
the luminaire.



Operator
Telephone
Fax
e-Mail

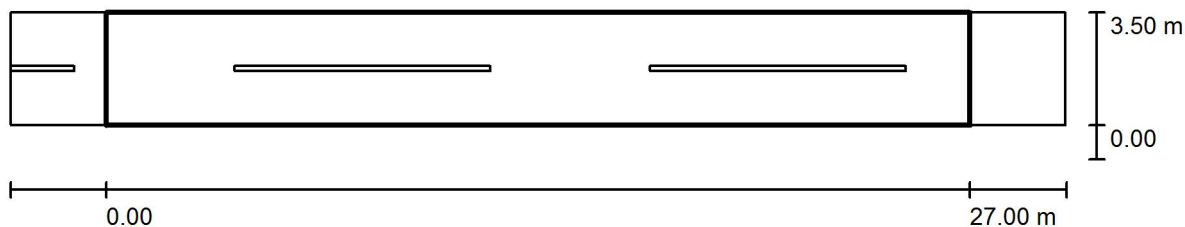
Silene, Teritorija pie skolas (skolas iela 19) / False Colour Rendering



lx

Operator
Telephone
Fax
e-Mail

Silene, Teritorija pie skolas (skolas iela 19) / Valuation Field Roadway 1 / Results overview



Maintenance factor: 0.85

Scale 1:236

Grid: 10 x 3 Points

Accompanying Street Elements: Roadway 1.

Selected Lighting Class: S3

(All lighting performance requirements are met.)

Calculated values:

Required values according to class:

Fulfilled/Not fulfilled:

E_{av} [lx]

9.37

≥ 7.50



E_{min} [lx]

6.30

≥ 1.50



Operator
Telephone
Fax
e-Mail

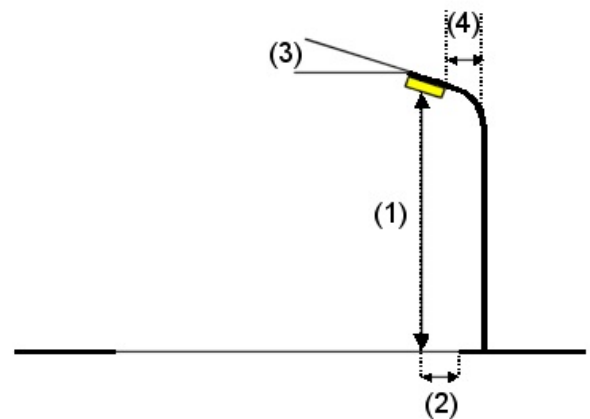
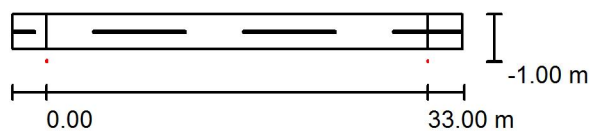
Silene, Austrumu iela / Planning data

Street Profile

Roadway 1 (Width: 3.000 m, Number of lanes: 2, tarmac: R3, q0: 0.070)

Maintenance factor: 0.85

Luminaire Arrangements



Luminaire:	RoadSpark SLIM 60W
Luminous flux (Luminaire):	6072 lm
Luminous flux (Lamps):	7440 lm
Luminaire Wattage:	60.0 W
Arrangement:	Single row, bottom
Pole Distance:	33.000 m
Mounting Height (1):	8.000 m
Height:	8.000 m
Overhang (2):	-1.000 m
Boom Angle (3):	10.0 °
Boom Length (4):	1.500 m

Maximum luminous intensities

at 70°:	450 cd/klm
at 80°:	260 cd/klm
at 90°:	29 cd/klm

Any direction forming the specified angle from the downward vertical, with the luminaire installed for use.

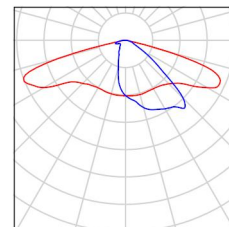
Arrangement complies with glare index class D.3.

Operator
Telephone
Fax
e-Mail

Silene, Austrumu iela / Luminaire parts list

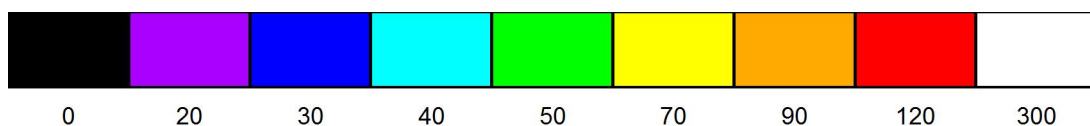
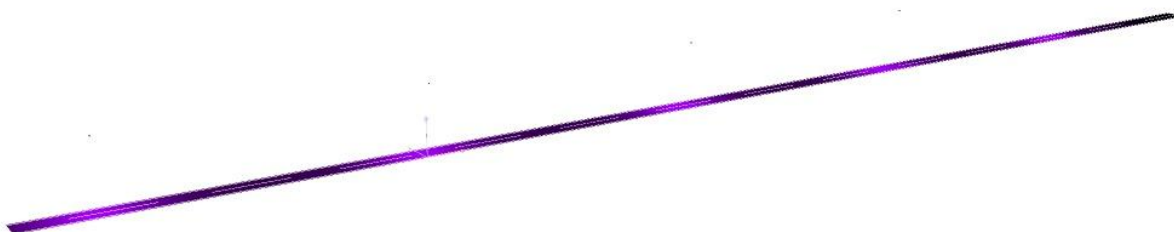
RoadSpark SLIM 60W
Article No.:
Luminous flux (Luminaire): 6072 lm
Luminous flux (Lamps): 7440 lm
Luminaire Wattage: 60.0 W
Luminaire classification according to CIE: 100
CIE flux code: 35 68 94 100 82
Fitting: 1 x Cree XP-G (Correction Factor 1.000).

See our luminaire
catalog for an image of
the luminaire.



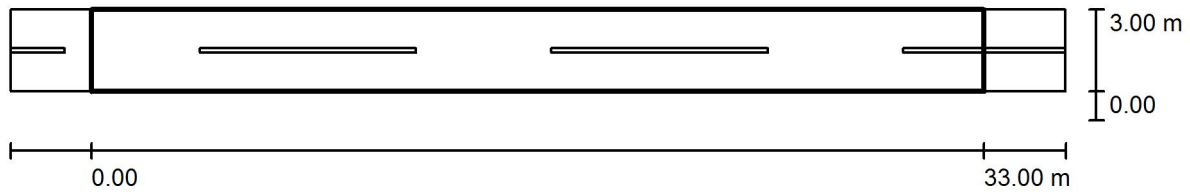
Operator
Telephone
Fax
e-Mail

Silene, Austrumu iela / False Colour Rendering



Operator
Telephone
Fax
e-Mail

Silene, Austrumu iela / Valuation Field Roadway 1 / Results overview



Maintenance factor: 0.85

Scale 1:279

Grid: 11 x 3 Points

Accompanying Street Elements: Roadway 1.

Selected Lighting Class: S3

(All lighting performance requirements are met.)

Calculated values:

Required values according to class:

Fulfilled/Not fulfilled:

E_{av} [lx]

10.44

≥ 7.50



E_{min} [lx]

6.03

≥ 1.50

