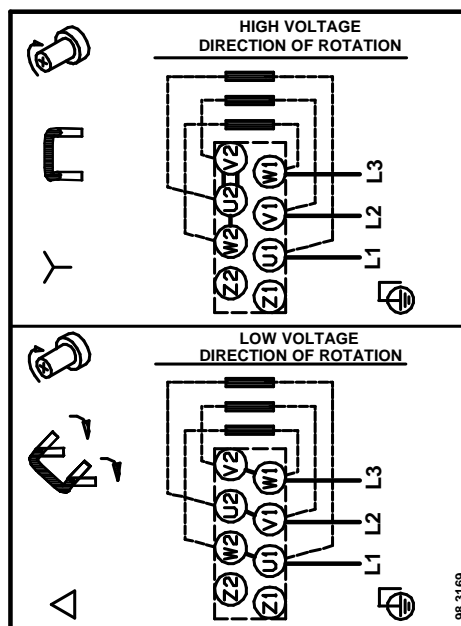
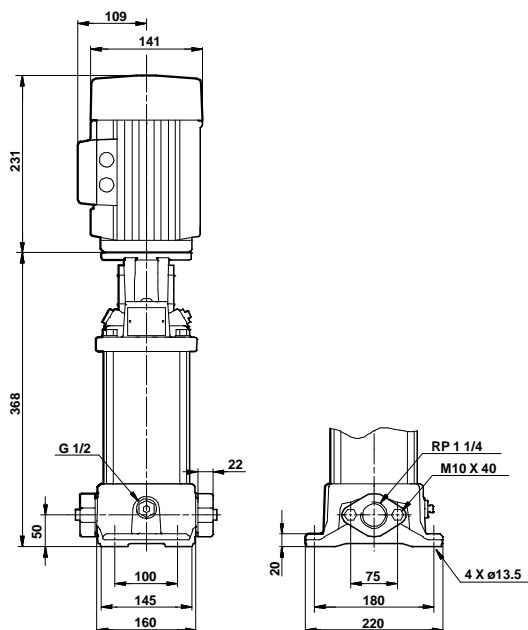
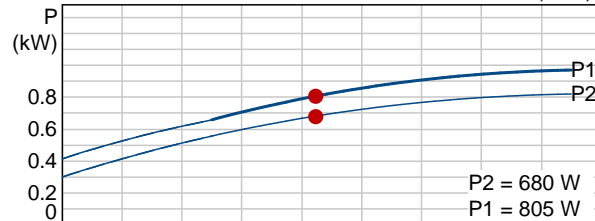
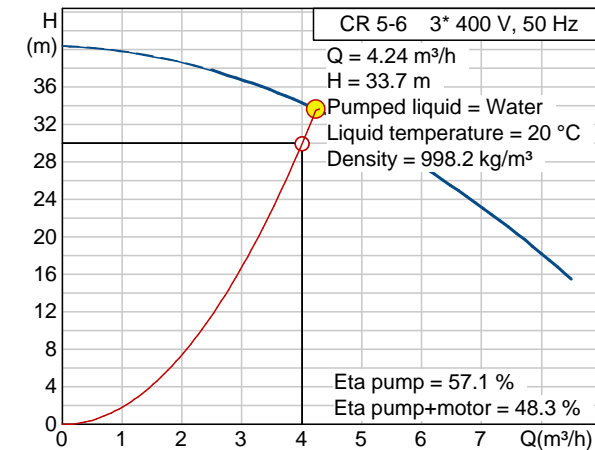
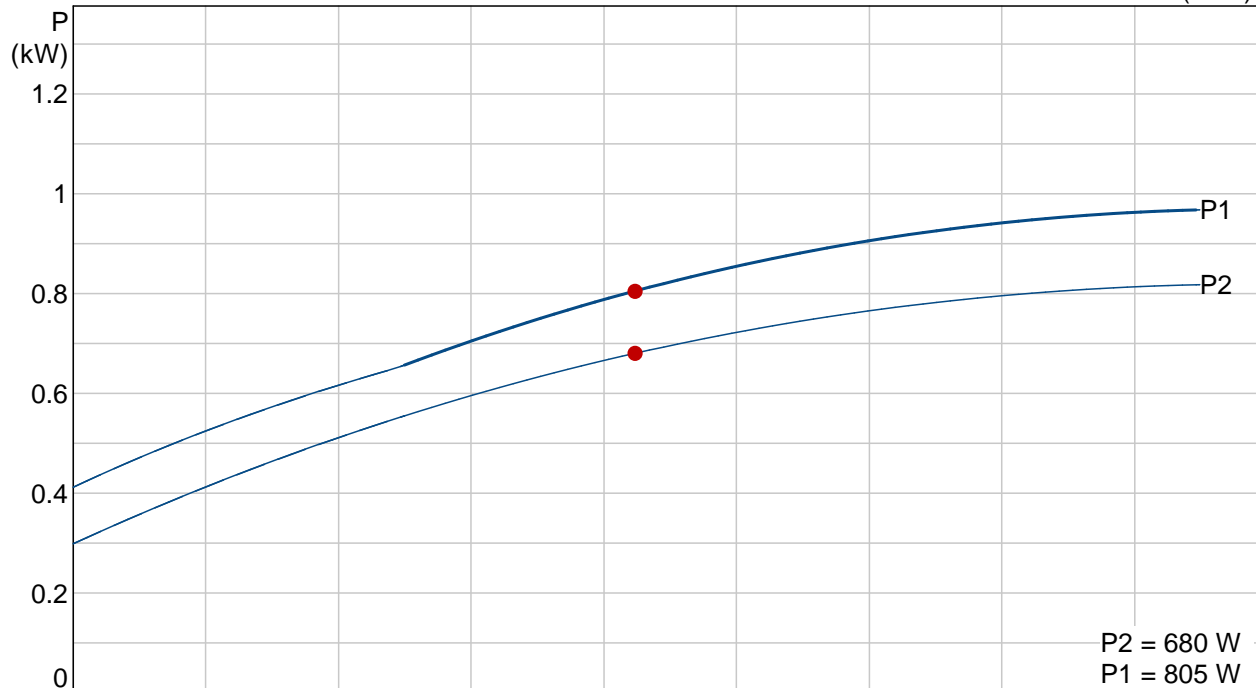
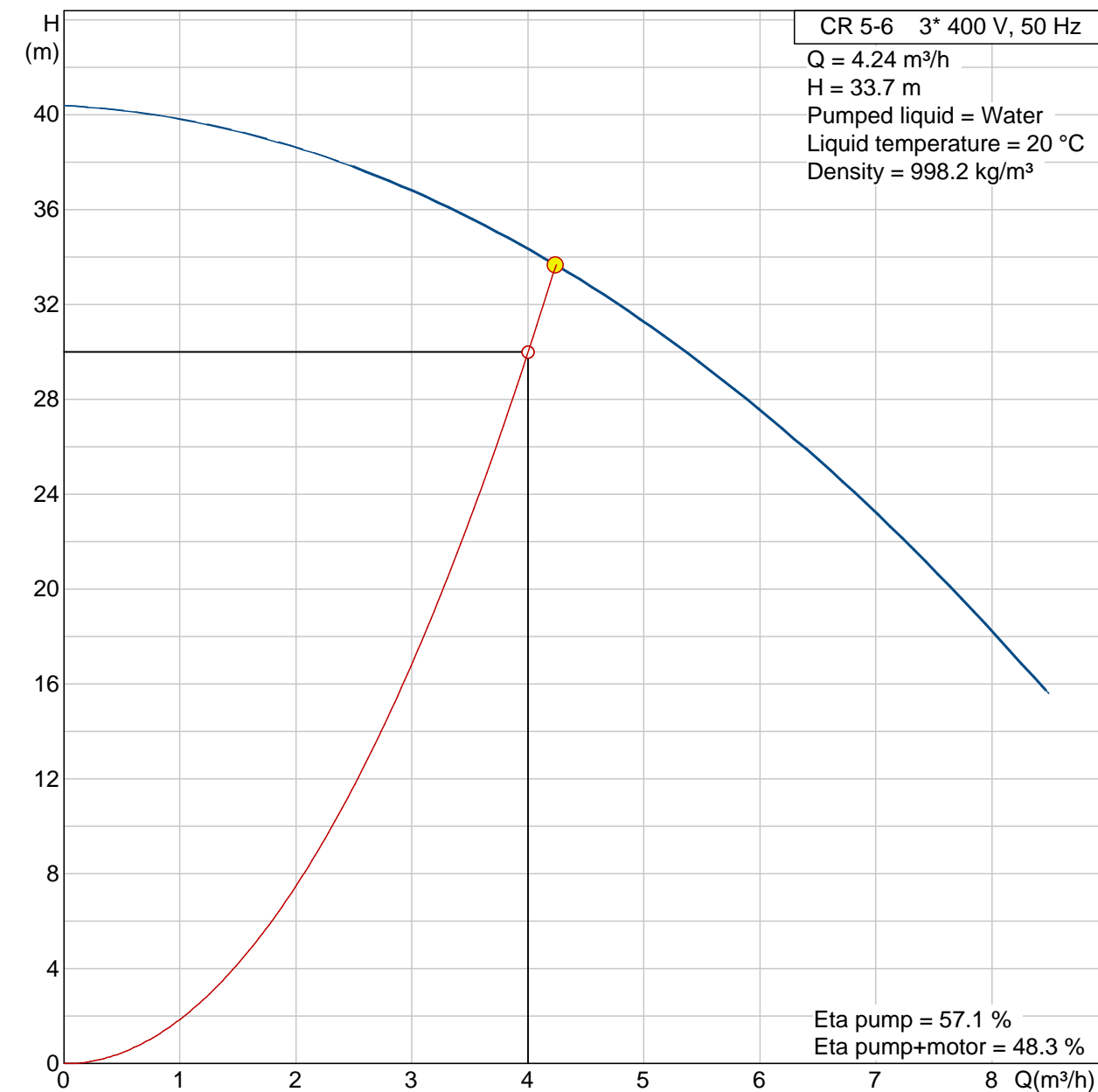


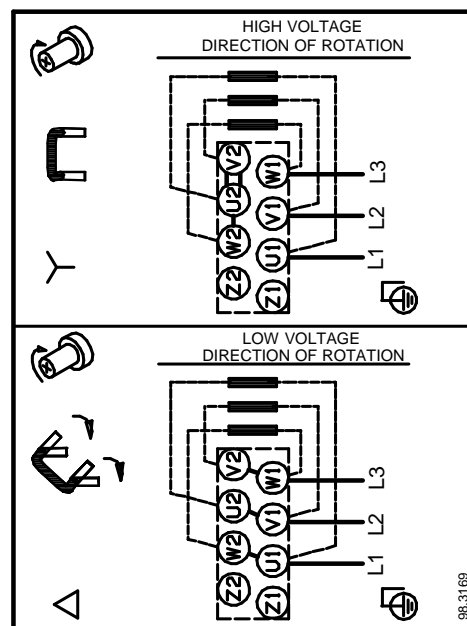
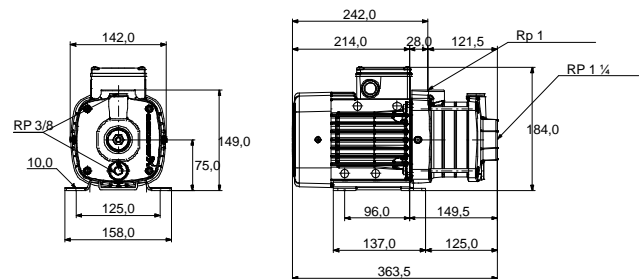
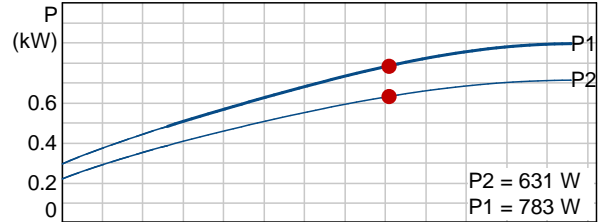
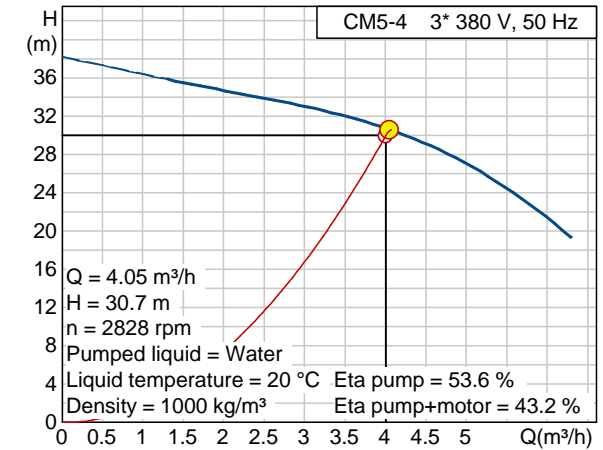
Description	Value
Product name:	CR 5-6 A-A-A-E HQQE
Product No:	96516979
EAN number:	5700396754086
Price:	On request
Technical:	
Speed for pump data:	2853 rpm
Actual calculated flow:	4.24 m³/h
Resulting head of the pump:	33.7 m
Impellers:	6
Shaft seal:	HQQE
Approvals on nameplate:	CE
Curve tolerance:	ISO 9906 Annex A
Stages:	6
Pump version:	A
Model:	A
Materials:	
Pump housing:	Cast iron EN-JL1030
Impeller:	ASTM A48-30 B Stainless steel DIN W.-Nr. 1.4301 AISI 304
Material code:	A
Code for rubber:	E
Installation:	
Maximum ambient temperature:	60 °C
Max pressure at stated temp:	16 bar / 120 °C 16 bar / -20 °C
Flange standard:	OVAL
Connect code:	A
Pipe connection:	Rp 1 1/4
Flange size for motor:	FT100
Liquid:	
Liquid temperature range:	-20 .. 120 °C
Liquid temp:	20 °C
Density:	998.2 kg/m³
Electrical data:	
Motor type:	80B
Efficiency class:	Efficiency class 1
Number of poles:	2
Rated power - P2:	1.1 kW
Power (P2) required by pump:	1.1 kW 1.1 kW
Mains frequency:	50 Hz
Rated voltage:	3 x 220-240 D / 380-415 Y V
Rated current:	4.45 / 2.55 A
Starting current:	640-700 %
Cos phi - power factor:	0,84-0,76
Rated speed:	2820-2860 rpm
Motor efficiency at full load:	82,8 %
Motor efficiency at 3/4 load:	84,5-82,5 %
Motor efficiency at 1/2 load:	84,5-81,0 %
Enclosure class (IEC 34-5):	55 (Protect. water jets/dust)
Insulation class (IEC 85):	F
Motor protec:	NONE
Motor No:	85D05105
Others:	
Net weight:	25.1 kg
Gross weight:	27.8 kg
Shipping volume:	0.05 m³



# 96516979 CR 5-6 50 Hz



Description	Value
Product name:	CM5-4 A-R-A-E AQQE
Product No:	96974681
EAN number:	5700315127786
Price:	On request
Technical:	
Speed for pump data:	2900 rpm
Actual calculated flow:	4.05 m³/h
Resulting head of the pump:	30.7 m
Impellers:	4
Shaft seal:	AQQE
Approvals on nameplate:	CE, WRAS, ACS
Curve tolerance:	ISO 9906 Annex A
Pump version:	A
Model:	A
Materials:	
Pump housing:	Cast iron EN-JL1030 AISI 30 B
Impeller:	Stainless steel DIN W.-Nr. 1.4301 AISI 304
Material code:	A
Rubber:	EPDM
Code for rubber:	E
Installation:	
Maximum ambient temperature:	55 °C
Maximum operating pressure:	10 bar
Max pressure at stated temp:	10 bar / 90 °C
Flange standard:	WHITWORTH THREAD RP
Connect code:	R
Pump inlet:	RP 1 ½
Pump outlet:	Rp 1
Liquid:	
Liquid temperature range:	-20 .. 90 °C
Liquid temp:	20 °C
Electrical data:	
Rated power - P2:	0.84 kW
Mains frequency:	50 Hz
Rated voltage:	3 x 220-240D / 380-415Y V
Service factor:	1
Rated current:	3,0-3,5 / 1,6-1,9 A
Rated speed:	2750-2810 rpm
Enclosure class (IEC 34-5):	55
Insulation class (IEC 85):	F
Motor protec:	NO
Others:	
Net weight:	13.5 kg
Gross weight:	16 kg



# 96974681 CM5-4 50 Hz

